

# DEE.P RESOURCES INTERNATIONAL LTD

Drilling, Civil & Water Engineering, Corrosion Control, Waste Management, Pipes Inspection (NDT), General Construction and Contractor,  
Equipment Calibration, Instrumentation and Certification & Procurements, Lifting Equipment Examination,  
Electrical and Maintenance Services, Solar Supply and Installation, General Generator and Heavy-duty Maintenance



D

R

## CORPORATE PROFILE

### PORT HARCOURT OFFICE ADDRESS:

PLOT 35 TRANS AMADI INDUSTRIAL LAY OUT, PORT HARCOURT, RIVERS STATE, NIGERIA

TEL: 08033156621 ,08124130520, 09033723224 EMAIL: [deepresoucesltd@gmail.com](mailto:deepresoucesltd@gmail.com)

### PORT HARCOURT SITE OFFICE:

CHIEF ELBOM ROAD, OPPOSITE CHARLES DALE SCHOOL, IGRITA, PORT HARCOURT. RIVERS STATE

**WARRI OFFICE ADDRESS:** H47, RD 2 IMMIGRATION ESTATE, AIRPORT ROAD, WARRI DELTA STATE

**LAGOS OFFICE ADDRESS:** NO.1 ADE AJAYI STREET, ZONE A4, OGUDU G.R.A, OGUDU, LAGOS

*Dee.p Resources International Limited*

## TABLE OF CONTENT

1. INTRODUCTION
2. OBJECTIVES OF DEE.P RESOURCES
3. COMPANY ACTIVITIES
4. AREAS OF EXPERTISE
5. COMPANY MANAGEMENT
6. MANAGEMENT BOARD
7. DEE.P RESOURCES MANAGEMENT STAFF
8. DEE.P RESOURCES MANAGEMENT STAFF
9. COMPANY ORGANIZATIONAL CHART
10. OUR CLIENTS/LIST OF JOB EXECUTED
11. LOCAL CONTENT (NIGERIA)
12. EMPLOYMENT OF NIGERIAN MANPOWER
13. CORPORATE SAFETY FUNDAMENTALS
14. H. S. E. POLICY/MANUAL
15. NDT WORK
16. COMPANY REGISTRATION DOCUMENTS
17. BRIEF PHOTO GALLERY

## 1 INTRODUCTION

**DEE.P RESOURCES INTERNATIONAL LIMITED** is integrated Drilling Services and Civil/Water Resources Engineering Company established in 2000 and incorporated in Nigeria in the year 2003 with Corporate Affairs Commission. We specialize in providing Drilling Services, Civil/Water Engineering, Corrosion Control, Instrumentation and Certification & Waste Management. We are duly registered with the appropriate Government agencies.

**DEE.P RESOURCES** through Drilling Services, Civil/Water Engineering, Corrosion Control, Instrumentation and Certification & Waste Management carries out quality services. This is to ensure that the need of our client are met, we also ensure that quality equipment and materials are utilized in order to deliver good service quality to our customers.

At **DEE.P RESOURCES** we are determined to satisfy our customers with effective service delivery, while cutting down on physical location, logistics, overhead costs and exploring other areas of co-operation. These have been made possible by the liberalization of policies and the development in information technology.

## 2. OBJECTIVES OF DEE.P RESOURCES

**DEE.P RESOURCES** has the principal objective of making available to the major corporations and government the technical know how for all phases of a contract. Our services cover from concept development through construction up to final acceptance of the completed project, site inspection, commissioning and management. **DEE.P RESOURCES** has an extensive database that enables it to cover the specific requirement of clients for long or short-term contract.

### OUR VALUE

- Integrity
- Professionalism
- Quality
- Excellence

### VISION

To be the first-choice service provider in the Civil/Water Resources Industry

## MISSION

Our mission is to create a result-oriented engineering company with an international outlook ranking amongst the best engineering contemporary companies. Dedicated to provide creative solutions to clients' needs and a firm commitment to professional excellence.

## COMPETITION

The Engineering, Drilling/Civil and Water Engineering in Nigeria are highly competitive. Contracts for workers or products and procurements are typically awarded on a competitive bid basis with customers usually requesting bids on projects/materials supply one to three months prior to commencement. The company's marketing staff contact operators known to have projects schedule to ensure that **DEE.P RESOURCES** partners have the opportunity to bid and win the project.

## OUR SERVICES

**DEE.P RESOURCES** offers Drilling Services, Civil/Water Engineering, Corrosion Control, Instrumentation and Certification & Waste Management services. These services can be provided as all-in consulting services or as stand-alone services tailored to suit individual client's requirements and budgets. These services include:

### Drilling & Well Services

- Drilling & Work Over rigs
- Rig survey, inspection & commissioning
- Well control audit
- Drilling location preparation/construction
- Oilfield hauling (land & offshore)
- Drilling, fishing & rental tools
- Tubing running & pulling services
- Tubular inspection
- Bulk haulage & transport trucks (vacuum & water trucks/barges)
- Cranes & lifting systems
- Drilling mud & chemical supplies
- Water supply for injection purposes (EOR)

### Production Facility Construction & Maintenance

- External & internal protective coating of vessels & pipelines (epoxy, tap wraps, blasting, etc)
- Treatment of produced water/effluent
- Design and installation of cathodic protection (CP) system
- Monitoring and performance evaluation of existing CP systems
- Flowline construction, replacement and leak repairs
- Flow equipment & instrument installation: valve, strainers, meters, etc
- Product tank construction & maintenance
- Pipeline cleaning to eliminate internal contaminants
- Geometry & bend radius inspection with smart (intelligent) pigs to help operators locate and evaluate conditions that might adversely affect the integrity of their pipelines.
- General production flow station maintenance and operation
- Pipeline construction and structural integrity and management
- Installation and maintenance of industrial machinery's.
- Installation and maintenance of industrial machinery's and Design modification.
- Building mechanical services.
- Spare parts procurement.

### Power Systems Installation & Maintenance

- Electric power transmission & distribution systems design, installation & commission.
- Installation & commissioning of mechanical & electric power generators, electric motors, pumps, & industrial machines



- Design & installation of electrical control/switch panels/Test post box.
- Supply, service & maintenance of electrical & mechanical power systems

## **CATHODIC PROTECTION**

**DEE.P RESOURCES** provide a complete engineering installation, maintenance and general management of Cathodic Protection System.

Our specialist service in this area include

- Deep well and Horizontal Ground bed construction
- Onshore close interval pipe/Soil potential pipeline surveyor
- Offshore Cathodic protection monitoring.
- Offshore/Onshore Surveys and supervision.
- Impressed Current Cathodic protection material.
- Turnkey contracting.
- Engineering Design, inspection and Manpower services.

## **Corrosion Prevention, Tank Cleaning and Degassing Services**

**DEE.P RESOURCES** renders various types of corrosion retardation and prevention services such as;

- Sand and Grit blasting
- Wet or Jet blasting
- Coating and painting.

We are capable of handling flow station/Gas station jobs on land swamp or at offshore locations. Taking all safety measures and applying corrosion inhibition techniques.

Painting is an important aspect of corrosion retardation and as such requires expertise to achieve the desired effect.

Our teams of painting inspectors are trained to ensure the required film thickness of all layers and no breakpoints in the continuity of the paint layers.

Our blasting standards are as per client requirement but as a minimum to white metal standard.

We also remove debris resulting from corrosion products and or fouling after from Crude / leaded tanks and provide degassing services when required. We offers field survey services like resistivity to determine a suitable place and type of ground bed and Pipe soil potential survey for existing facilities as well as installation of new ground bed.

**DEE.P RESOURCES** is also involved in trouble shooting, and failure analysis to confirmed circumstances of damage or accident.

## **Electrical, Electronic, Instrument and Measurement**

### **Electrical Machine Design and Construction**

We render the following services:

- Design and construction of A.C Machines used in Drives.
- Design and construction of Contactor Controlled process machines
- Maintenance of A.C Drives
- Maintenance of High Voltage Switch gears.
- Procurement and Installation of High Voltage Switch gears.
- Testing and Installation of High Voltage Transformer (See up/down)
- Electrical Fault Diagnosis and Maintenance
- Protective.

### **Industrial Electronics**

- Design and Construction of thyristor Controlled Drives. (i.e. Dc Drive)
- Design and Construction of Printed circuit boards of specific machines (Etching)
- Fault Diagnosis and maintenance
- Design and construction of Electronic controls using discrete components.

- Testing and commissioning
- Installation of Fire Alarm System
- Construction of Control Panels.

#### **Instrumentation, Control and Measurement**

- Tubing
- Complete Instrumentation from sensing to Final Control Element
- Flow measurement and control
- Level measurement and control
- Pressure measurement and control
- Fault Diagnosis in Existing Instrumentation System
- Calibration of Instruments
- Design and Construction of Closed/Open Loop control system.
- Design and Installation of Electro Pneumatic systems.

### **CIVIL AND WATER RESOURCES ENGINEERING**

**DEE.P RESOURCES** has over two decades of experience in the application of efficient and cost effective engineering techniques and solutions to challenges in civil engineering construction and the investigation, development and management of both surface and ground water resources.

Our team of engineers has a broad spectrum of skills in civil engineering construction projects and their experience has been accumulated over decades.

#### **Water Resources Engineering**

- Ground water exploration and environmental investigations
  - Detect fracture zones, locate likely aquifer structures, and trace salt water intrusions
  - Detect leakage plumes from landfills
  - Map environmental contaminant plumes
- Water well drilling and service
- Portable water and waste water
  - Treated water delivery/supply to offshore facilities
  - Sea water pumping for desalination plants
  - Water treatment systems
- Design & constructions of water supply facilities.
  - Municipal /Industrial water distribution pipeline
  - Water storage tanks
- Irrigation and drainage projects
  - Raw water pumping for irrigation
  - Drainage of flood zones and discharge basins

#### **Civil Engineering**

- Civil engineering construction
  - Drilling / oilfield location preparation
  - Building construction
- Environmental protection and remediation
  - Shoreline protection, remediation and reclamation & erosion control projects
  - Dredging / hydraulic sand filling

#### **Civil & Water Resources Engineering Consulting**

##### **---Design & Project Management**

We at **DEE.P RESOURCES** are very committed to health, safety and environmental issues and procedures in all its spheres of operation. Below are the descriptions of services offered by **DEE.P RESOURCES**.

- **Quality Control – Quality Assurance**

Over the years, **DEE.P RESOURCES** has developed comprehensive and effective quality assurance procedures, covering quality planning, control and quality inspection. Procedures are continually reviewed with clients, suppliers and local community authorities to assure effectiveness. To substantiate our promise of quality, excellence and flexibility DEE.P RESOURCES has put in the company with professionalism.

- **Planning**

To deliver safe and high productivity services, **DEE.P RESOURCES** begins with design and the job planning. For water wells **DEE.P RESOURCES** design a unique borehole for each individual project work taking into consideration the geology of the intended well site, what the water will be used for and the intended production facility. This systematic planning and design of our water wells assures our customers of water well with excellent production properties.

In oil and gas production, **DEE.P RESOURCES** employs a multi-disciplinary engineering team to meet the needs of production facility projects and management.

Planning our projects begin with review and analysis of any existing engineering data. This is an integrated design effort with the client using the latest technology in the industry.

- **Resource and Personnel**

**DEE.P RESOURCES** maintains a highly experienced and trained workforce comprising professional engineers and geoscientists. Attrition in the oil industry has enabled us to have the best people to assure our customers of quality and prompt services.

The company routinely gives the right orientation to both new and old employee to guard against burnout as well as maintaining and satisfying workplace needs.

Apart from on the job training which an invaluable on-going feature in DEE.PRESOURCES is (our engineers are sent to specialized external courses for field operations.)

**DEE.P RESOURCES** deploys modern state-of-the-art drilling and work over rigs and production facility maintenance equipment for all its operations. In house field maintenance and repairs supports all our field operations.

This capability increase reliability and flexibility of DEE.P RESOURCES operations and significantly reduces project turnaround time.

- **Responsibility and Authority**

Performance objective is set for each job description. This helps our team to focus on customer needs with accountability and measurability as the fundamental basis.

**DEE.P RESOURCES** has also instituted an integrated approach aimed at achieving outstanding performance in the workplace. The core of this is the Performance Development Planning (PDP). By this approach, the boss and the subordinate jointly set target for the subordinate with respect to specify jobs on on-going projects and regularly review the target achievement.

### **3. COMPANY ACTIVITIES**

The company activities include the following:

**Engineering Services:**

- Borehole Drilling Services
- Civil & Water Engineering
- Design Engineering
- Corrosion Control
- Instrumentation and Certification
- Waste Management
- Manpower Supply

#### 4. **AREAS OF EXPERTISE**

The management skills of **DEE.P RESOURCES** would be utilized to bring projects to successful completion. The list below identifies some of the projects, which **DEE.P RESOURCES** and partners provide to enhance the services of engineering and Water Resources Industries.

We can provide services for the following type of projects:

##### **DRILLING & WELL SERVICES**

- Drilling & Work Over rigs
- Rig survey, inspection & commissioning
- Well control audit
- Drilling location preparation/construction
- Oilfield hauling (land & offshore)
- Drilling, fishing & rental tools
- Tubing running & pulling services
- Tubular inspection
- Bulk haulage & transport trucks (vacuum & water trucks/barges)
- Cranes & lifting systems
- Drilling mud & chemical supplies
- Water supply for injection purposes (EOR)

##### **PRODUCTION FACILITY CONSTRUCTION & MAINTENANCE**

- External & internal protective coating of vessels & pipelines (epoxy, tap wraps, blasting, etc)
- Treatment of produced water/effluent
- Design and installation of cathodic protection (CP) system
- Monitoring and performance evaluation of existing CP systems
- Flowline construction, replacement and leak repairs
- Flow equipment & instrument installation: valve, strainers, meters, etc
- Product tank construction & maintenance
- Pipeline cleaning to eliminate internal contaminants
  - Geometry & bend radius inspection with smart (intelligent) pigs to help operators locate and evaluate conditions that might adversely affect the integrity of their pipelines.
- General production flow station maintenance and operation
- Pipeline construction and structural integrity and management
- Installation and maintenance of industrial machinery's.
- Installation and maintenance of industrial machinery's and Design modification.
- Building mechanical services.
- Spare parts procurement.

##### **POWER SYSTEMS INSTALLATION & MAINTENANCE**

- Electric power transmission & distribution systems design, installation & commission.
- Installation & commissioning of mechanical & electric power generators, electric motors, pumps, & industrial machines
- Design & installation of electrical control/switch panels/Test post box.
- Supply, service & maintenance of electrical & mechanical power systems

#### 5. **COMPANY MANAGEMENT**

##### **Company Focus**

Our goal is simple, client satisfaction through the provision of quality services with friendly designs that will be delivered on timely basis.

Management objective is to establish **DEE.P RESOURCES INTERNATIONAL LIMITED** as the most efficient fully integrated service provider with cost effective solutions to client's requirements.

**DEE.P RESOURCES INTERNATIONAL LIMITED** business is dependent upon technical and commercial skills as well as carefully targeted investment strategy. The crucial element of performance lies in the ability to provide high caliber services.

**DEE.P RESOURCES** will continue to anticipate clients' demands by constantly enhancing the range and quality of information technology (IT) capabilities, thus providing the highest quality of services, utilizing its assets to the full potential. Through this philosophy, **DEE.P RESOURCES** ensures that every service offered is the best in its class.

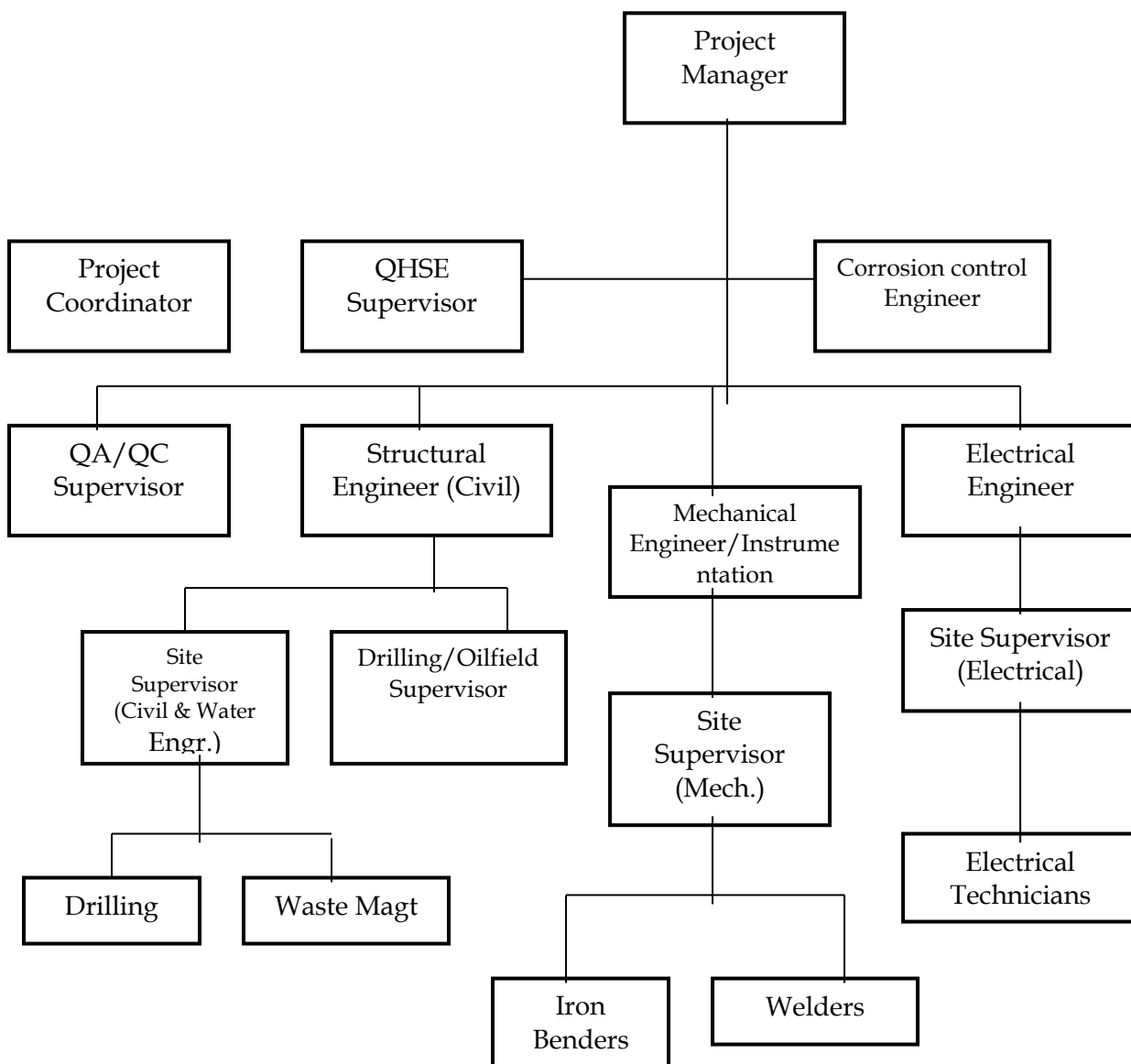
## **6. MANAGEMENT BOARD**

1.	Head of Management	<b>Dotun Sanusi</b>
2.	Head of Human Resources/Project	<b>Femi Motunolase</b>
3.	Head of Operation	<b>Rasheed Oladosu</b>
4.	Head of Logistic	<b>Ogunro Nicholas O</b>
5.	Head of Finance	<b>Ashibende Pius Agiake</b>
6.	Head of Administration & Bus. Dev.	<b>Kpela Prince G.</b>
7.	Head of HSE	<b>Augustine O. Olumoye</b>

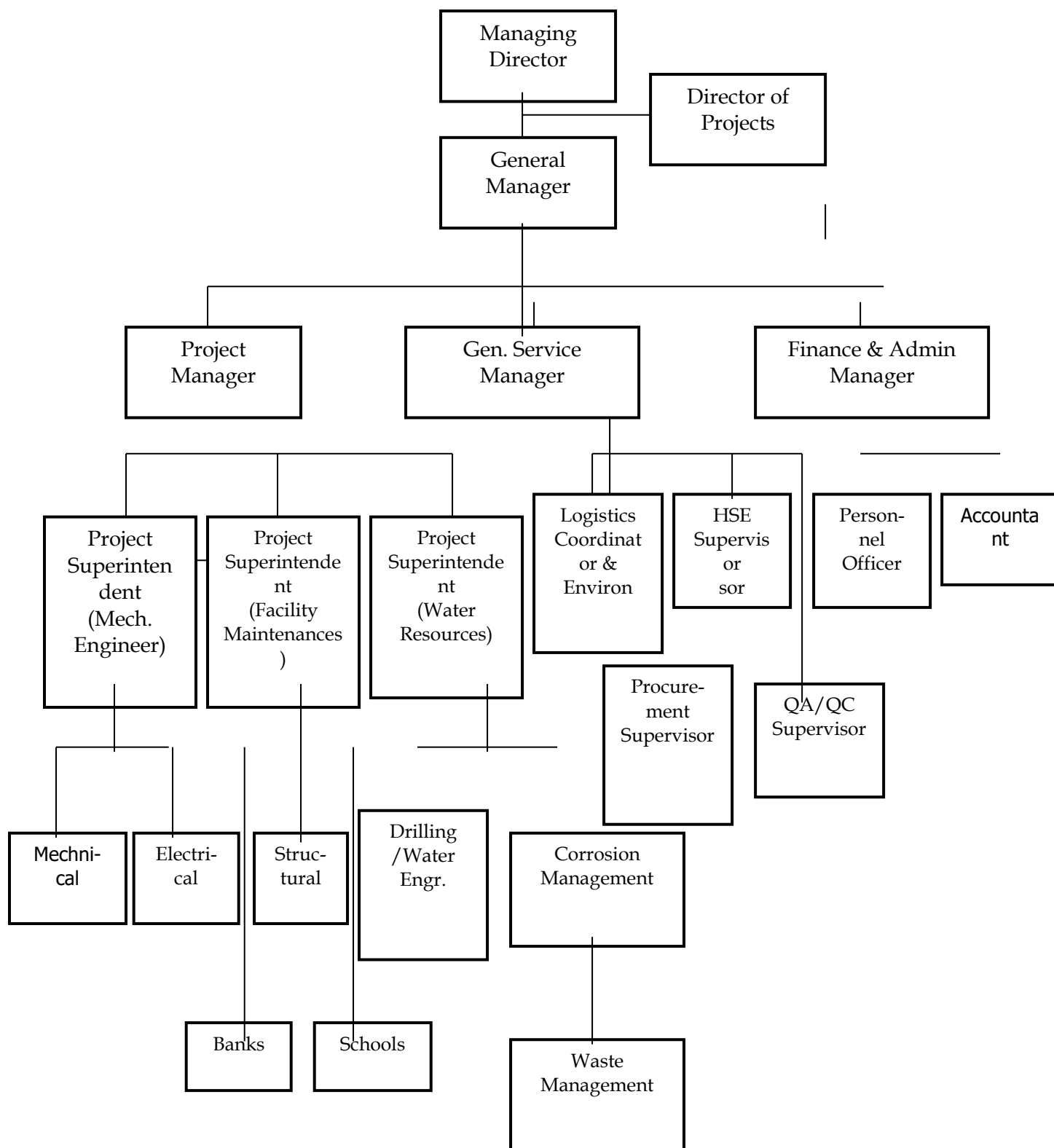
## **7. DEE.P RESOURCES MANAGEMENT STAFF**

- General Manager
- Project Manager
- Project Superintendent (Electro-Site Mechanical)
- Site Manager (Borehole Drilling/Structures/Buildings)
- QA/QC Supervisor
- Logistics Coordinator
- Corrosion control Engineers
- Quantitative Surveyors
- Structural Engineers
- Electro-Mechanical Coordinator
- Environmental Engineer
- Admin / Account Manager
- HSE Manager

## 8. TECHNICAL STAFF CHART



## 9. COMPANY ORGANIZATIONAL CHART



## 10. OUR CLIENTS/LIST OF JOB EXECUTED

CLIENT	JOBDESCRIPTION	YEAR	STATUS
KEYSTONE BANK	All Branch Renovation and Maintenance of Bank Facility	2025	Ongoing
ASPIRE POWER SOLUTION	Servicing and Maintenance of 350kva and Generator	2025	Ongoing
ASPIRE POWER SOLUTION	Servicing and Maintenance of 20kva and Generator	2025	Ongoing
SERIC IMPIANTI LIMITED	Skips Rental /Hiring	2025	Ongoing
STERLING GLOBAL	Hilux Rental Service/Logistics	2025	Ongoing
HPCN	Calibration of Rig 120 Calibration of Rig 119 Calibration of Rig 187	2025	Ongoing
Calculus Digit	Hiring of Hilux /Hilux Rental	2025	Completed
HPCN RIG 119	NDT inspection on all Rig Structures and Mast	2025	Completed
OIL TOOLS SERVICES	Hilux Rental Services	2025	Completed
BONNY	Bonny Drilling job	2025	Completed
JAMES MARK	Drilling of 220m Borehole At Neol Alakiri (NNPC gas Flotation)	2025	Completed
KEYSTONE BANK LIMITED	Repair of Damaged Roof and Suspended Ceiling at Iwo Road, Abayomi Layout, Oyo State	2025	Completed
HPCN 120	NDT/MPI inspection of mast structures	2025	Completed
KEYSTONE BANK LTD	Repair of Damaged Roof at Sapele, Delta State	December, 2024/2025	Completed
HPCN	Calibration of Rig 120 Calibration of Rig 119 Calibration of Rig 187	2024	Completed
PENTIUM LEAP VENTURES LIMITED	Chad drilling skip hiring	2024	Completed
FINNING LIMITED	Hyprep Ogoni Drilling of Water Well, Installation of submersible pump and commission	2024	Completed
BESTCONCEPT	Supply of Pipes	2024	Completed
AMASCO CONSULTANT LIMITED	Drilling of Water Well, Installation of submersible pump and commission	2023	Completed
AGIP NIGERIA LTD.	Drilling of Anode Well, Installation and commission.	2023	Completed
MANTECH SERVICE LIMITED/ TOTAL NIG. PLC	Drilling of Water Well, Installation of 20HP submersible pump and commission	2023	Completed
MANTECH SERVICE LIMITED/ AGIP NIGERIA LTD.	Drilling of Anode Well, Installation and commission.	2022	completed
TASANIOLA NIGERIA LIMITED.	Drilling of industrial bore hole and installation of pumping	2022	completed



	machine/maintenance and commission.		
HPCN/ ENERGIA EBENDO NORTH	Instrumentation /Calibrations and Certification	2022	Completed
ASHBARD ENERGY COMPANY LTD	Corrosion Control on hydrant storage tank	2020	Completed
MAMTECH SERVICES LTD/ TOTAL NIG LTD.	Drilling of Cathodic Protection Well thrust boring/cable lining & commission.	2020	Completed
MAFUTA ENERGY COMPANY LTD	Logistics Services	2020	Completed
FAMMAL TECHNICAL / AOS ORWELL	Logistics Services	2020	Completed
MEFFIO CATERING SERVICES LTD	Fumigaton/pest control	2020	Completed
NEW BIRTH ENVIRONMENTAL PROJECT LTD	Supply of mud skips and pumps.	2020	Completed
REAL ACCORD NIG LTD	Hiring mud skip/pumping machine installation of pumping machine.	2019	Completed
OIL FILED MANAGEMENT SERVICE	Hiring of mud skip	2019	Completed
TASANIOLA NIG LTD	Drilling of industrial bore hole and installation of pumping machine/maintenance and commission.	2019	Completed
KELGE GLOBAL SERVICES LTD	Drilling of 4" Borehole	2019	Completed
ILAJI STADIUM AND RESORTS CENTER	Drilling of industrial bore hole and installation of pumping machine	2019	Completed
ILAJI FARM	Drilling of industrial bore hole installation of pumping machine	2018	Completed
NEMBE Community Borehole Rehabilitations / NDDC	Servicing of industrials borehole	2018	Completed
HPCN/SINOPEC	Instrumentation /Calibrations and Certification	2018	Completed

ICAST SCHOOLS LTD	Drilling of Industrial borehole and Pumping Installation	2018	Completed
AMAJ CHAZON LTD.	Hiring of Skip	2017	Completed
HPCN/SINOPEC	Instrumentation /Calibrations and Certification	2017	Completed
EXCEEDING STONE INDUSTRIAL CO. LTD	Civil Work: Fencing	2016	Completed

HPCN/SINOPEC	Instrumentation /Calibrations And Certification	2016	Completed
ALBERCH INDUSTRIES LIMITED	Drilling Of Industrial Bore Hole	2016	Completed
NIGER DELTA PETROLEUM RESOURCES LTD.	Ndt Test/Pipeline And Gas Lift Line 4" And 2" Pipe	2015	Completed
FAMAL TECHNICAL	Civil And Construction, Leasing	2013	Completed
TNL NIGERIA LIMITED	Tank Fabrication/ Pipeline Construction And Maintenance.	2013	Completed
MONTEGO UPSTREAM	Hiring Of Skips	2012	Completed
T.N.L/SEPLAT	Pumping of waste water from pit into tankers/flushing of cottons into waste pit.	2012	Completed
HPCN/SINOPEC	Instrumentation /Calibrations and Certification	2012	Completed
T.N.L/OANDO	Construction of waste pit/Evacuation of waste water	2012	completed
NOTORE /GRANDTECH	Drilling of pilling hole	2012	Completed
GEOPLEX/TRANSOCEAN	Sand Blasting and painting of Riser pipes/Hydro blasting and maintenance	2012	Completed
SHELL I.A	Sands blasting and painting of stack exhaust of Gas turbine unit and painting of gas pipe line.	2012	Completed
GEOPLEX /TRANSOCEAN	Surface preparation and painting of Riser Buoyancies' Modus.	2011	Completed
T. N. L EQUIPMENT NIG. LTD.	Drilling of industrial bore hole and installation of pumping machine/maintenance and commission.	2011	Completed
HENEN PETROLEUM COMPANY NIG LTD	Supplying of blasting Sand	2011	Completed
HENEN PETROLEUM COMPANY NIG LTD	Inspection and Calibration of the Gauges	2011	Completed
GEOPLEX /TRANSOCEAN	Sand blasting and painting of Riser Pipe	2011	Completed
MC FEGOR NIG LTD	Hiring of Skip	2011	Completed
GEOPLEX /TRANSOCEAN	Sand blasting and painting of Riser Pipe /maintenance.	2011	Completed

GEOPLEX /TRANSOCEAN	Sand blasting and painting of Riser Pipe	2010	Completed
MC FEGOR NIG LTD	Hiring of Skip	2010	Completed
EQUIP & OFFSHORE	Drilling plumbing and maintenance of houseboat water reservoir, vessel and fumigation	2010	Completed
T. N. L EQUIPMENT NIG LTD	Sand blasting and painting of plant equipment and cabin unit caterpillar	2010	Completed
HENEN PETROLEUM COMPANY NIG LTD	Inspection and Calibration of the rigs	2010	Completed
OIL TES NIG LTD	Plumbing/Servicing and maintenance	2009	Completed
HPCN	Hiring of reserve tanks	2009	Completed
HENEN PETROLEUM NIG LTD	Hiring of crane		
HENEN PETROLEUM COMPANY NIG LTD	Sand blasting and painting of rig equipments and accessories	2009	Completed
HENEN PETROLEUM NIG LTD	Sand blasting and painting of 7 mud tanks	2009	Completed
OBIOKU COMM.DEVELOPMENT BAYELSA.	Servicing of 9 5/8 borehole and provide & Install of 7.5Sub.Pumping Machine	2008	Completed
WPD NIG LTD	Discharging of waste water and fumigation service	2008	Completed
WPD NIG LTD	Sand Blasting of filtration unit and treatment plant	2008	Completed
EQUIP & OFFSHORE	Houseboat water reservoir, plumbing maintenance & fumigation	2008	Completed
DETTLE NIG.LTD/AGIP	Drilling of Cathodic well Agip Location/Kwale	2007	Completed
WPD NIG. LTD	Tank Blasting and Painting	2007	Completed
DETTLE NIG.LTD/DEWOO ENGR.	Anode Installation (NLNG pipeline OBOB)	2007	Completed
KASOLUTE NIG. LTD	Machining of wire line spare parts	2006	Completed
RICHARD WELLS NIG.LTD	Fabrication of well head	2006	Completed
RAMMTECH SERVICE LTD	Fabrication of test post box (Elf Nig. Ltd Obaji Location)	2005	Completed
RESS RESOURCES LTD.	Fabrication of Steel panel door (Elf Nig. Ltd Obagi Location)	2004	Completed

## 11. Local Content (NIGERIA)

We state here below the Nigerian Content for any project awarded to this company --**Dee.p Resources International Limited**

As a company we have a great deal of core talented professionals to support any project and many of our key personnel have been involved in all aspect of a major project.

The following steps details how we would pursue a project based on the key issues raised in any project specification.

### **Industrial Benefits / Technology**

The role of industrial benefits to the local community is so important, that it is the intent of **DEE.P RESOURCES INTERNATIONAL LIMITED** to train as many local personnel as possible. Only key senior positions will be held expatriate personnel.

**DEE.P RESOURCES INTERNATIONAL LIMITED** would always identify capable talented individuals that will be trained on-the-job. Nigerian co-ordination of activities will be done by training a native Nigerian in all facets of Document control, Planning and Scheduling.

### **Vendor & Site Inspection:**

**DEE.P RESOURCES** can provide a team of engineers, technicians and buyers to work with contractors/suppliers and establish purchasing specifications. Afterwards the team will perform the technical and commercial comparisons that will be submitted to the client for final decision.

### **Specialist Manpower**

**DEE.P RESOURCES** can provide either individual specialists or a complete team of engineers, supervisors and technicians undertaking a variety of projects such as:

1. Borehole Drilling Supervision
2. Water Management
3. Corrosion Control
4. Civil Supervision & Management

## 12. Employment Of Nigerian Manpower

### **GENERAL**

**DEE.P RESOURCES INTERNATIONAL LIMITED** is 100% Nigerian Company whose Directors and Staff are mostly from oil producing states of Nigeria. The company recruitment policy seeks to involve locals from project areas in oil producing states and use the indigenes in any project area where they deem qualified. It is only when none of the available spaces can be filled by indigenes that other states would be sourced and if not available we begin to source for expatriates. The company's subcontracting policy follows exactly the same pattern. **DEE.P RESOURCES** endeavors to involve any Nigerian personnel for field execution with potential to execute the job as a local supervisor so as to under study the expatriate with a view to develop local capacity for similar services in future. Rigorous recruitment and overseas training ensures minimum expatriates personnel on the job site. In project with repetitive steps, Nigerian counterpart gradually takes over while expatriate personnel are demobilized.

As a local business, we understand the environment and its difficulties and are able to handle local problems as they arise. We would like to emphasize that to the fullest extent possible, we arrange for contract works to be executed locally, maximizing upon indigenous labor and services content.

## 13 CORPORATE SAFETY FUNDAMENTALS

*Dee.p Resources International Limited*

## **Introduction: Principles and Scope**

Most Human activities could lead to personal injury and damage of property hence, it is believed that all accidents have causes and that greater percentage, if not all, of them could be prevented.

This manual sets out the responsibilities involved in implementing safety programs on the work site. It also present records and procedures for identifying causes of accidents and reporting systems that are to be maintained on the projects with the understanding that accident do not suddenly occur; they are caused by acts or unsafe conditions.

## **Principles**

All accidents are preventable

A job can be adjudged well done only when it is carried out safely

Achieving safe operation is our number one priority

Accidents does not happen; they are caused so, don't cause accident

Safety must not be sacrificed for the sake of expediency

Safety is everybody's business.

**SCOPE**

This document shall be used as a baseline for implementing and the enforcement of the Company's project and shall be amended where necessary as new standards are adopted and when the client's specifications/standards exceed the company's policy.

Our company shall always contact the Supervising Department/Loss Prevention Unit for guidance if in doubt of any safety or environmental procedures.

## 14 H. S. E. POLICY/MANUAL

### HSE Policy Statement

**It is the policy of DEE.P RESOURCES INT'L LIMITED** that its operation should be carried out at all times in such a way as to ensure the health, safety and environment of its employees and all persons likely to be affected by operations, including clients, sub-contractors and the general public are safe-guarded, and that the same dedication will be shown to the protection and conservation of the environment.

Health, safety and environment (HSE) is a line management responsibility for which individuals will be held accountable and it is recognized that implementation of this policy by line management will lead to greater efficiency and higher standards throughout all departments within **DEE.P RESOURCES**.

It is the duty of all employees to take reasonable care of their safety and that of others who may be affected by their acts or omissions.

**DEE.P RESOURCES** is committed to work within the regulations and codes of practices laid down by decrees and governmental orders and liaise closely with all government departments, our customers and professional and academic bodies to ensure improvement of all HSE regulations.

It is **DEE.P RESOURCES** policy to sustain the adequate training of all its personnel to ensure that the company procedures and government regulations are known and complied with to the letter.

All sub-contractors working for or on behalf of **DEE.P RESOURCES** will be required to maintain the same policies and standards as **DEE.P RESOURCES**.



.....

**FEMI MOTUNOLASE**  
***MANAGING DIRECTOR***

## **HSE OBJECTIVES, TARGETS AND PLANS**

### **OBJECTIVES**

- To prevent incidents and protect personnel and avoid suffering and hardship.
- To ensure that all activities are undertaken safely.
- To promote an awareness of personal responsibility in all personnel with regard to occupational health, safety and environmental issues.
- To exhibit that safe operational procedures are an essential element in providing an efficient service.
- To demonstrate through satisfactory records that the business is being conducted in compliance with these policies.
- To uphold client's HSE policy and contribute to achieving corporate HSE targets.

### **IMPLEMENTATION**

- Management and supervisors are accountable for the implementation of these objectives.
- Personnel will be required to comply with all HSE rules as a condition of employment issues are to be encouraged.
- When reviewing new business or work methods, a full account is to be taken of the HSE aspects to ensure that standards required by this policy are maintained.

### **TARGETS**

1. To achieve zero lost time injury (LTD).
2. To eliminate accidents of any nature.
  - a) To achieve zero fatality
  - b) To eliminate lost work cases
  - c) To minimize occurrence of property damage
  - d) To achieve zero-fire incident
  - e) To achieve zero oil and chemical spilling in all our areas of operations.
3. Minimum unsafe acts/conditions by strengthening UAA as a proactive and correction tool for accident prevention.
4. Eliminating unhygienic and unsanitary conditions



## QUALITY POLICY STATEMENT

AT DEE.P RESOURCES INTERNATIONAL LIMITED we are committed to the provision of quality services at all times, which will both, meet and exceed our customers' expectations. This is to promote Customers' confidence in our ability to consistently and constantly delivery quality services at all times.



---

**FEMI MOTUNOLASE**  
***MANAGING DIRECTOR***

## **COMMUNITY AFFAIRS, SAFETY, HEALTH, ENVIRONMENT AND SECURITY (CASHES) POLICY**

DEE.P RESOURCES INTERNATIONAL LIMITED **MISSION** is to nurture and sustain a highly technically oriented business, through accepting responsibilities that can lead to the contribution in knowledge, skills, accomplishments, satisfactions, and efforts to the society. Management is committed to nurturing and sustaining the health, safety and security of her staff, equipment and environment. To accomplish this, management feels there is nothing more than making sure that:

We develop safe work methods, and make them appealing to employees.

All equipment's, tools and machines are maintained in good repair.

Encourage and develop a good relationship with our host communities.

Be committed to the nurturing and preservation of our environment.

Management is committed to nurture and sustain **SAFETY**.

Employees and visitors in addition should realize that the existence of accident is a proof of a wasteful operation that destroys the corporation mission.

The company also recognizes the hazardous nature of its operations – both oil and non-oil related and the adverse consequences of its failure to observe, check and control or completely eliminate the acts and conditions that could result in accidents or incidents.



---

**FEMI MOTUNOLASE**  
**MANAGING DIRECTOR**

## **EMERGENCY RESPONSE POLICY**

The objectives of every emergency response shall be to:

- Consolidate existing cordial relationship with host communities/clients and to save others' lives.
- Assist the injured
- Reduce damage to client or company's resources and environment.
- Defend corporate integrity

All systems, strategies, and procedures necessary to achieve these objectives shall be well coordinated.

Reasonable attention shall be given to the development and sustenance of relevant resources toward the achievement of defined objectives. All personnel shall participate fully in all activities planned towards these objectives.



---

**FEMI MOTUNOLASE**  
**MANAGING DIRECTOR**

## COMMUNITY AFFAIRS POLICY

**DEE.P RESOURCES INTERNATIONAL LIMITED** shall continue to **identify** with the needs and aspiration of its host communities in the execution of its operation.

**DEE.P RESOURCES INTERNATIONAL LIMITED** believes that it shall not operate in isolation and therefore shall liaise with client, host communities, relevant government departments and others in order to ensure a safe and peaceful working atmosphere.

The following steps will be taken immediately there is any occurrence of threats from surrounding / neighbor community in which the project is being executed.

1. Identify location of activity.
2. Carry out investigation to ascertain if there has been any occurrence of prevailing threats from criminal records in the past.
3. Carry out security survey.
  - a. Identify items to be protected
  - b. Identify vulnerabilities
  - c. Decide on any type of security measures to be implemented, taking cognizance of the main objective which is to deter criminals.



---

**FEMI MOTUNOLASE**  
**MANAGING DIRECTOR**

## **ENVIRONMENTAL POLICY**

**DEE.P RESOURCES INTERNATIONAL LIMITED** believes that our natural environment, which is of vital importance to all-living things, must be protected at all times.

We shall, in pursuance of our technical objectives, recognize the significance of environment by conducting our activities in such a way as to achieve maximum protection of the environment. We shall also put in place necessary measures aimed at rectifying the environment, when unavoidable damage is done.

Audit of work areas shall form and integral part of our routine site audits.

Environmental Impact Assessment (E.I.A) shall be done on as-needed basis. Prompt reporting, investigation and follow up of negative interference with the environment shall be effected without delay.

All workers shall participate in activities aimed at developing and sustaining awareness of the need to protect and rescue work third party environment.

The company shall follow strictly all relevant clients' and governmental regulations on the environment.

## **DRUGS AND ALCOHOL POLICY**

DEE.P RESOURCES INTERNATIONAL LIMITED is aware of the hazardous health implications of drugs and alcohol and shall continue to discourage the consumption and abuse of drugs and alcoholic beverages by all workers.

Any worker suspected to be influenced or impaired by drugs/alcohol while on duty shall be subjected to predetermined test. Necessary actions shall be taken against worker(s) confirmed to be influenced or impaired by drugs or alcohol.

Relevant awareness programs on the dangers of drugs and alcohol shall be launched and sustained from time to time, and participation by workers shall be compulsory.

DEE.P RESOURCES INTERNATIONAL LIMITED shall comply with necessary client and Government regulations on drugs and alcohol.

It is a termination offence for any employee of DEE.P RESOURCES INTERNATIONAL LIMITED to be under the influence of Alcohol or in possession of or under the influence of any non-prescribed drug such as cocaine amphetamine (Speed), Marijuana, Heroin, Hashish or other illegal or controlled substance while working or residing on any job site including all waterborne operations, or property under the control of DEE.P RESOURCES INTERNATIONAL LIMITED.

This rule applies to all operations and all locations.

---

## SMOKING POLICY

Smoking of any sort is injurious and harmful to human health. Many lives are either shortened or lost yearly due to smoking. Also, many unplanned fires resulting in immeasurable loss occur due to smoking.

To check this danger, DEE.P RESOURCES INTERNATIONAL LIMITED prohibits Smoking in all work sites and public places.

Any breach of this prohibition shall not be tolerated.

Also smoking is not only injurious to health but also a potential safety hazard. Smoking in public places exposes non-smokers to health related hazards and it is the duty of DEE.P RESOURCES INTERNATIONAL LIMITED to protect employees from unnecessary exposure to hazards.

The smoking of cigarettes or pipes is prohibited at all installation construction sites.

This ban also includes all conference / meeting rooms, corridors, public areas and shared offices, unless otherwise agreed between all occupants of such offices.



---

**FEMI MOTUNOLASE**  
**MANAGING DIRECTOR**

## SEAT BELT POLICY

DEE.P RESOURCES INTERNATIONAL LIMITED recognizes the importance of the **seat belt** as a life saving device.

As a result of this recognition **seat belt** is fitted in every sitting position in all company's vehicle and mobile heavy-duty equipment.

It is therefore mandatory that every driver/operator, front and rear seat passenger use available seat belt before take-off of vehicle.

Foot must make any movement that does not require the use of seat belt.

Breach of **seat belt** rule must not be accepted.

Safety and transport departments are empowered to monitor and report non- compliance to management without delay.

In order to minimize Road Transport Accident (RTA) and in keeping with the company's Journey Management procedure, it is binding on all employees of DEE.P RESOURCES INTERNATIONAL LIMITED to make use of his/her SEAT BELT when in transit.

Repeated violations of this policy will attract strict management wrath.



---

**FEMI MOTUNOLASE**  
*Dee.p Resources International Limited*

## **MANAGING DIRECTOR**

### *SAFETY AUDITING POLICY*

DEE.P RESOURCES INTERNATIONAL LIMITED strongly believes that systematic routine and non-routine audits of workers' behavior, condition of work environment and tools/equipment is the best way to prevent injuries (accidents) to personnel, damage to equipment and negative impact on the environment.

Prompt auditing of site aimed at identifying, rectifying, assessing and recovering potential hazards shall remain the center of our corporate accident prevention strategy.

Each worker shall be encouraged to participate fully in hazard management, and must therefore comply with relevant hazard management procedures.

The management shall reward active participants in this all important accident prevention strategy.



---

**FEMI MOTUNOLASE**  
**MANAGING DIRECTOR**

### **WASTE MANAGEMENT POLICY**

DEE.P RESOURCES INTERNATIONAL LIMITED recognizes that waste (liquid or solid), generated from its activities can constitute hazards to the environment and to the health and safety of personnel, and the general public.

To eliminate such hazard, the company shall, before the execution of any given task, assess the source, types and quantity of waste that shall be generated and ensure the use of conventional/acceptable methods and resources in the collection, handling, and disposal of such waste. Record of waste generated and disposed of shall be kept.

Services of environment and waste management consultants shall be utilized, when necessary. The company shall also monitor evacuation procedures and ensure that the waste evacuated is disposed of at approved dumping areas.



---

**FEMI MOTUNOLASE**  
**MANAGING DIRECTOR**

## **SECURITY POLICY**

The protection of the human, material and other resources used in our daily operations shall continue to be given priority attention.

The company shall employ the services of full time (day and night) energetic and trained men for surveillance purpose in our entire site and in transit. The services of relevant governmental armed security agents shall be used to protect company's personnel and property, when and where necessary, to support corporate and internal security arrangement.

The surveillance team shall monitor movement of company's personnel, property and other persons in and out of the company's work areas.

Personnel and materials in transit shall also be provided with maximum protection, escort shall be provided for designated journeys.

Corporate security emergency plans and procedures shall be strictly adhered to at all times.

Every worker shall participate fully in all drills and activities aimed at developing and sustaining high security consciousness.

The company shall comply with relevant government and client rules and procedures on security issues.



---

**FEMI MOTUNOLASE**  
**MANAGING DIRECTOR**

## **LIFTING POLICY**

We believe that every lifting task be carried out in such a way as to avoid damage of property or injury to personnel.

The company shall ensure routine audits (inspections/check) of lifting equipment, accessories and facilities at all times.

All lifting rope shall be regularly, tested and tagged for easy identification.

All identified deficiencies (if any) shall be rectified without delay.

Safe lifting procedures including analysis of weight of load and safe working load (S.W.L) of equipment must be carried out before commencing any lifting activity.

Competent operators and signalmen shall be responsible for executing lifting task.

Prompt reporting of faults shall be encouraged.

Every personnel is expected to be guided accordingly.



## **TRANSPORTATION POLICY**

DEE.P RESOURCES INTERNATIONAL LIMITED shall ensure safe movement of her human and material resources from one point to another. To achieve this policy objective, the company shall, depending on the mode of the transport water, land and air, use equipment (water craft, Aircraft, vehicle etc.) of high integrity, and fit for the said purpose.

Statutory and safety regulations including “No Night Sailing” rule, as it concerns transportation shall be complied with. Trained, competent and certified operating crew shall be provided to handle transportation equipment.

Regular and routine inspections/checks of transport equipment, its accessories and other facilities shall be carried out to re-affirm their technical integrity.

The use of corporate journey management guide shall remain mandatory for all movements.

Every personnel are expected to co-operate with transport and safety departments in the implementation of this policy.



---

**FEMI MOTUNOLASE**  
**MANAGING DIRECTOR**

## PERSONAL PROTECTIVE EQUIPMENT (PPE) POLICY

It is the policy DEE.P RESOURCES INTERNATIONAL LIMITED to provide relevant and high quality Personnel Protective Equipment (Coveralls, Safety footwear, hardhats, Hand gloves etc) for all persons engaged in the operations.

DEE.P RESOURCES INTERNATIONAL LIMITED shall continue to enforce effective use and maintenance of available Personal Protective Equipment, carry out regular condition audit and replace defective ones when necessary.

CASHES Officers and Supervisors shall be responsible for maintaining records of personal protective Equipment in stock, and allocated to personal responsibility.



---

**FEMI MOTUNOLASE**  
**MANAGING DIRECTOR**

## LOCAL LABOUR POLICY

1. It is the policy of DEE.P RESOURCES INTERNATIONAL LIMITED to continue to identify with the economic aspiration and manpower development needs of communities where it operates. Part of this identification is our commitment to employ nominated / certified youths of such environment with proven integrity in our operation.
2. DEE.P RESOURCES INTERNATIONAL LIMITED shall ensure that only youths actively engaged in operation are paid, and shall also ensure that such youths are trained and absorbed into the system depending on available resources – time and opportunities. The policy of **‘NO WORK, NO PAY’** shall apply to all categories of workers including local labour.
3. DEE.P RESOURCES INTERNATIONAL LIMITED shall ensure strict supervision of local labour like other categories of personnel in order to achieve excellence in production, CASHES and management.

## **SUB CONTRACTING POLICY**

The company shall, when necessary, engage the services of sub-contractors (indigenous or foreign) with proven technical, CASHES and others considerations to perform certain tasks for it or on its behalf. Such sub-contractor (whether certified by the company or recommended by client or any other agent) shall be managed the same way as company's resources and activities.

The company also recognizes three classes of indigenous sub-contractors, and shall not fail to identify with their economic aspirations within the limits of available resources and opportunities at its disposal.

## **OCCUPATIONAL HEALTH POLICY / PLAN**

### **Medical Examinations**

1. Prior to employment, an applicant must undergo a complete medical test and a certificate of fitness issued by a physician.
2. Self-medication is strictly discourages. All illness arising from work will be reported and proper diagnosis is to be followed with appropriate medical treatment.
3. We maintain a retainer clinic where physic examinations or referrals are done to take care of ailing employees.
4. First line treatment for minor injuries at work will be duty of the first aider who will be on every of our work sit. A first aid box fully stocked with medicines relevant to the injuries/aliments anticipated together with a dispense record book will be kept.
5. To ensure that there is continuity between the first aider and the retainer doctors, the first aid treatment register will be regular reviewed by the doctor for the following reasons:
  - (a) Provide advice on the effects of a particular job on health.
  - (b) Periodic or special examinations to protect workers against hazardous substances.
  - (c) Undertaking epidemic and ergonomic studies of exposed groups of workers to determines long – term effects of the work environment and atmospheric conditions on their health.

### **Health Provision at Site**

- Highly potable water will be provided for workers supplied in clean water tank, barge or as bottled water. The safety officer and client must certify whatever the means of supply and the source of portable water okay.
- Wholesome food, hygienically prepared will be provided and served at work sites.
- Hands must be washed after visiting the toilet; no food or smoking will be allowed. Smoking is injurious to health and workers who smoke are advised in their own interest.
  
- There are three routes of entry of toxic substances, into the body and these are by:
  - 1 Inhalation of dust, vapor or gas, these cause damage to the respiratory tract or long tissue or enters the bloodstream.
  - 2 Injection of solids or liquids via the digestive system.
  - 3 Through the skin.

### **ORGANIZATIONAL RESPONSIBILITY / POLICY IMPLEMENTATION MANAGEMENT**

The responsibility for ensuring implementation of the safety policy for health, safety and environment rests directly upon the management of DEE.P Responsibilities will be assigned to authority. Safety officers will also be appointed and be present at every work site. In addition to the above, the management will carry out the following measures to ensure effective implementation of the company's safety policy.

- a. Allocate sufficient resources to provide and maintain conditions and places of work that are reasonably and practicably safe and healthy.
- b. Ensure that all machinery, plants and equipment are in good working order.
- c. Appropriate tools for the job will be made available and safe.
- d. Provide where necessary, approved personal protective equipment and clothing and to ensure that employees understand their proper usage.
- e. Ensure that adequate instructions are given to employees on all aspects of their work, especially those hazardous to health.
- f. Review operations and work methods from time to time in order to
- g. Incorporate where necessary, changes in statutory obligations and new
- h. Technologies.

## **FOREMEN AND SUPERVISORS**

The immediate implementation of HSE policy at work rest with the line supervisors. They are primarily concerned with preventing accidents, which result in injuries to persons and damage to company property. It is the responsibility of the supervisor to give clear and explicit work instructions to his men. He has to ensure that every employee under him complies with the instructions and work practiced stipulated for the job assigned. Necessary personal protective equipment must be worn before workers are allowed into such job areas that require precautions.

## **SAFETY OFFICER**

The safety officer is to advise and ensure that all work activities are conducted in a safe manner. He will advise the supervisors and management and safety matters as may be necessitated by the job to be executed. He will carry out the following duties.

- Organize and conduct morning briefing with workers on a daily basis.
- Update the safety notice board and operational instruction
- Ensure that all fire – fighting facilities are present on site and educate work force on their usage.
- Conduct drills at specified intervals to ascertain operational readiness during emergency.
- Ensure that workers are provided with relevant PPE enforce their usage.
- Ensure that appropriate work permits are obtained from the client and all the precautions stipulated strictly observed.
- Ensure that the right tools are being used for the job.
- Certify that all equipment's in service are in working condition.
- Hold safety meetings with the work force every two weeks and the minutes shall be properly documented and sent to the client's engineer in charge of the project being executed.
- Display appropriate safety notices and sign boards in the work site.;
- Ensure that functional first aid box is on site and all employees made obtain treatment no matter how minor the injury may be.
- Regular inspection of work place and advising management on hazardous conditions noted.
- Report and investigate any accident that may occur on site. Compile monthly safety accident statistics.

## **PERSONNEL TRAINING**

**DEE.P RESOURCES** management believes in training and retaining of both new and old staff. The company will continue to invest in this area. A trained and skilled worker is an invaluable asset. Both in-house and external training programs are used. Employees should take advantage of this gesture in developing themselves and improving on their knowledge and safety awareness.

The level of training will depend on the type of work and the level of supervision required. The aim is to acquaint the worker with the work processes and the necessary skills and behavior required of him. Apart from safety training, toolbox and weekly safety meetings are systems used to get safety across. The management shall ensure that all categories of staff are given the necessary training to enable them discharge their duties safely.

- Opportunity will also be taken of the fire-fighting course, defensive driving course and swimming training organized by our clients from time to time.
- Emphasis on the training exercise will insist on the proper use of the need to maintain safety gadgets.
- Furthermore, training will focus on the recognition of hazard, accident prevention and safe handling of equipment.
- Regular weekly site safety meeting will be instituted and retain the services of a safety officer to take full responsibility for safety program.

## **SAFETY MEETINGS**

Safety meetings shall be held every two weeks or monthly as the case may be, to discuss unsafe acts and dangerous work//equipment. Also the safety officer will bring to the attention of employees his observations during inspections and new safety guidelines/directives from the client. Safety meetings shall be properly documented and minutes of such meetings circulated to our clients and other concerned. In addition, site safety morning brief shall be organized regularly in all our sites.

## **ACCIDENTS AND INCIDENTS**

### **ACCIDENT REPORTING**

Accidents cause suffering, pains and death to the victims and their families, waste of money, materials and damage to plants and machines/equipment. It is our desire to prevent them. **DEE.P RESOURCES** therefore place great emphasis on the prevention of accidents. No efforts should be overlooked to achieve these objectives.

So far, man has not been able to completely eliminate accidents. Hence wherever an accident occurs, its cause[s] must be determined in order to prevent a reoccurrence. In the light of the above, management and staff must ensure that all accidents however minor are reported to their line supervisor[s] for documentation.

It should be noted that incidents reporting is not to tell on any staff, allocate blames of for punitive measures control in place in order to check the hazards associated with such incidents.

Near misses and lost time injuries [LTI] must be reported promptly, investigated, recommendations made,

implemented and monitored against future recurrence.

All field accidents, near misses and First aid cases shall be reported to the HSE coordinator through the HSE officer within twenty-four [24] hours.

The following MUST form part of the report: -

- Name of injured victim.
- Date and time of accident.
- Location of accident.
- Description/diagram of location.
- State of victim
- Cause[s] of accidents.
- Injuries sustained.
- Witness to accident.
- Recommendation.
- Active Medical Evacuation [MEDEVAC]

## ACCIDENT INVESTIGATIONS

As important tool in preventing the recurrence of incidents and proffering solutions by way of learning from the past mistakes, accident investigations shall be accorded priority by **DEE.P RESOURCES** management. In this wise, all near misses and accidents no matter how minor must be reported for investigation.

As soon as possible [ASAP] and practice after reporting, the investigation team shall hold a meeting with all witness and injured person[s] [if possible] to prepare an initial description report of the accident preparing the entire situation sketches [refer to the company's accident investigation procedures].

All accidents investigation reports shall be documented in a retrievable system and analyzed for control of increasing trends from threats by **DEE.P RESOURCES HSE** committee. Recommendations shall be passed on the management for consideration, approval and implementations. The following is the order of investigation: -

CATEGORY	ACTION PARTY	TARGET
Lower risk Potential	HSE coordinator, field engineer or crew Head, Tool pusher, HSE Officer, Worker as may be assigned.	Within forty-eight [48] hours of reporting of the accident.
Medium Risk Potential	HSE coordinator, field engineer or crew Head, Tool pusher, Senior staff, workshop supervisor and HSE officer.	Within 24 hours of reporting the accident.
High-risk potential.	Managing Director, base manager, project manager, field Engineer, HSE coordinator and senior officers	Within 12 hours of reporting of accident.

## ACCIDENT INVESTIGATION PROCEDURE

Once an accident is reported, the following steps should be taken:-

- The incident has to be recorded and classified to determine the level of investigation.
- Establish the scope of the investigation.
- Constitute the investigation team in line with risk potential.
- Furnish team with the background information as reported, work nature, plans and schedules.
- Team to mobilize swiftly into action and apply the 4PS involved investigation, i.e. P-people, P-Position, P-part, and P-paper [relevant document including pictures etc].
- Conduct interview with all witness and the victim[s] if possible.
- If MEDEVAC is involved, obtain relevant information from the clinic.
- If possible, have a pictorial coverage of the location of incident.
- Team to demobilize and make a comprehensive report including recommendations.
- From the investigation reports, corrective measures to be vividly developed by the HSE steering committee headed by HSE coordinator and endorsed by the managing director.

### *[a] Objectives*

- To investigate thoroughly all hazardous incidents for prompt reporting within 24 hours.
- To study reports and take appropriate action in order to prevent the recurrence of such incident of similar ones.
- To communicate the findings and recommendations of the investigations to personnel for correction and prevention.
- To identify trends in a timely fashion and initiate preventive and recovery measures.

### *[b] Procedures/Guidelines documentations*

**DEE.P RESOURCES** management shall ensure that office and field personnel adhere and follow strictly the procedures set out in the company HSE manual for investigation.

## DISCIPLINARY PROCEDURES FOR DEFAULTERS

In **DEE.P RESOURCES**, we believe that a disciplined society is pride to its members, thus **DEE.P RESOURCES** has put in place a systematic proactive disciplinary procedures for correction, prevention of recurrence rather than witch-hunting and/or punishing.

Disciplinary procedures shall have team responsibility as its aim focus. That is, one man's default is everyone's offence and severity rating shall be determined to demonstrate its risk potential prior to initiating any procedure. Such incidents/unsafe acts include but not limited to the following not using seat belt, life jacket, shin Guard,



fork stick, job master/swamp shoes, local swimming, right driving sailing etc. the trial of every incident of sufficient severity shall be maintained uniquely for proper monitoring.

The following procedures shall apply for implementation of disciplinary procedures for persistent flouting of safety rules and regulations.

**[a] First offender**

If an unsafe act is observed for the first time, the defaulter and the team shall be verbally cautioned. This notwithstanding, the incident shall be investigated to ascertain any underlying cause[s]. The team shall be given feedback on the outcome of the investigation with documentary evidence.

**[b] Repeat of offence**

After the aforementioned step has been taken and any member of the team commits the same incident, a written formal warning letter shall be issued to the defaulter. This shall also be communicated to the team and the management properly notified.

**[c] Persistent defaulter**

The next time shall incur suspension for a period not less than one month without pay OR termination of appointment at the discretion of the management depending on the incident's severity potential of the act committed.

**Note:**

In all cases, the offence, the corrective measures and the outcome of investigation if any shall be disseminated to the entire staff of **DEE.P RESOURCES**.

**EMERGENCY SITUATION CONTINGENCY**

However, after all efforts to prevent the occurrence of an unwanted event, accidents may still happen. Primarily, first aid medical evacuation procedures are in place in our company's safe policy manual but accidents occur in varying forms and are of varying magnitude. Some could even result in sudden change in the condition of either the human or material resource of an organization, and apart from disrupting normal operation, could result in more damage to the human and material resource of the organization. This could be identified as a crisis or an emergency situation.

In order to avoid more damage resulting from confusion and stampede, and to prevent the crisis situation from escalating, it is wise to identify specific emergencies or crisis situations for which specific plan of action be drawn. All such plans be practicable within the limits of human materials resources, and aim at:

1. Saving life.
2. Minimizing pain and suffering.
3. Minimizing waste on normal operation.
4. Restore normal operation.

All the emergency plans are directed towards realizing maximum assistance at the shortest possible time, and ensure that all services likely to be involved or affected are informed within the shortest possible time. An orderly and effective response to the measures in place is of vital importance for achieving desired result.

**RESCUE TEAM/COMMAND STRUCTURE**

The rescue team in an emergency shall include the following: -

1. Project manager.
2. The site supervisor.
3. The site safety officer.
4. First Aider.

Other members of the rescue team shall include employees from the security and as shall be requested and directed by the site supervisor.

### **SPECIFIC SITUATION EMERGENCIES**

In our operation the following emergency situations are envisaged:

1. Serious injuries
2. Fire disaster
3. Accommodation unit going up in flames
4. Serious injury resulting from lifting operations or falling from a high.
5. Road traffic accident
6. Personnel drawing
7. Armed robbery attack
8. Blow-out/explosion

### **MEDICAL EVACUATION [MEDEVAC]**

On medical emergency [e.g. serious injury]

- Give location and condition of patient
- State assistance required

### **FIRE EMERGENCY PROCEDURES**

If you discover fire outbreak:

- Raise alarm [shout fire! Fire!!]
- Operate alarm system if possible
- Telephone fire department for assistance on 144
- Try to put off fire [DON'T RISK YOUR LIFE]
- Assemble outside at a safe place for head count

If you hear the fire alarm

- Leave the room/worksite at once
- Following the exit route
- Assemble at the muster point for roll call
- Don't re-enter the building or worksite.

### **GENERAL SAFETY AND PROCEDURES**

#### **SAFETY GADGETS AND EQUIPMENT**

The company has acquired for issue to site workers and operations such as protective safety wears as safety shoes, helmets, hand-glove, eye protectors, welding goggles and masks, depending on the nature of works they are engaged in. Such safety wears or equipment must be worn or used as the need arises. Site supervisors have been mandated to take any disciplinary action they deem fit against any staff that does not put on his safety wears.

#### **Insulations Must Be In Good Condition.**

Electrode holders and earth clamps must be in good condition

Cable terminals are okay

On- off switch is conspicuously located

All belts, pulleys, and dangerous moving parts are properly guarded.

### **Safety during Project Execution**

- **DEE.P RESOURCES** will take adequate steps to ensure that reasonable and necessary precautions are taken to prevent any accident from recurring.
- In addition to acknowledging the strong safety commitment of our client, **DEE.P RESOURCES** will strive to build in cooperate safety objectives similar to those of the clients and wholly supported by the management.
- **DEE.P RESOURCES** shall in execution of works comply with the most stringent codes of proactive prevailing tin the oil industry in addition to in-house regulations.
- **DEE.P RESOURCES** must therefore; before any job ensure that its familiar with the requirement and implications of safety clauses in the contract for the execution of the jobs.
- Safety requirement of **DEE.P RESOURCES** are congruous with and inseparable from the safety interest of SPDC and all safety relate documents will be deemed to affect **DEE.P RESOURCES** personnel.
- The work may be executed in the yards, on-shore or off-shore, in either case, **DEE.P RESOURCES** must strive to:
  - 1 Maintain and keep work areas tidy.
  - 2 Wear hard hats, overall and where necessary other relevant personal protective requirement
  - 3 Observe NO SMOKING sign in areas where smoking is prohibited.
  - 4 Never carry out a job without necessary permit or authorization from a competent person preferably the client representatives on site.

## **PERSONAL PROTECTIVE EQUIPMENT [PPE]**

Personal protective equipment are pieces of equipment and apparels used or worn by workers to protect him or herself against risk or hazards existing in his work situation. They do not prevent or indemnify the worker against accidents. They only minimize the workers exposure to hazards or reduce the gravity of the injury sustained. A worker is therefore making a grave mistake if he deliberately exposes himself to risks just because he is putting on personal protective equipment. For effectiveness, the right type of personal protective equipment should be provided. This calls for knowledge of the hazards existing in the work place. Such equipment must conform to existing standards acceptable in that area. Both employees and visitors are expected to wear the necessary protective equipment whenever they are going into the area where such hazard exists.

- Safety helmets must be worn at all times in working area where the head must be protected against flying particles, falling load or hitting it against objects.
- Where there is fear of contacts with life electrical parts, plastics or non-metallic helmets should be worn.
- Employees climbing or working at high elevations [Derricks] must wear approved safety harness.
- Safety goggles/face shields must be worn when using a grinding wheel, blasting, hammering, chiseling and when working with chemicals. Goggles must be worn when the eyes are exposed to injurious light such as during welling operations.
- Respiratory apparatus must be worn to protect against inhaling of dust, toxic fumes and dangerous gases. They must be worn before an employee goes into an oxygen deficient atmosphere [e.g. manhole].
- Nose masks must be used during spray painting.
- Hand gloves protects the hand, fingers and palms against cuts, scratches, bruises and burns [both from heat and chemicals]. They must be worn before handling caustic soda, acids, sharp and hot object, etc.
- Ear protection [ear muff or plug] must be worn at all times in high noise areas.
- Safety shoes and boots protect feet and ankles from impacts punctures. All workers must wear them. Rain boots protects feet from wet conditions.
- Aprons, raincoats, knee pads, leggings, protective creams and overall are also personal protective equipment to be uses as at when necessary.
- Damaged personal protective equipment should be discarded. They should not be managed.
- Employees are to be educated on the importance of using these apparels. They should not use apparels, which are over-sized. They should take care and maintain these equipment's so that they can give the intended protection to the workers.

## **GOOD HOUSE KEEPING**

Housekeeping means the orderly arrangement and placement of equipment, tools, materials [raw and finished products] and waste. This implies that there is a place for everything and that everything is in its place. It leads low accidents rate, fire hazards, operating cost and wastage. On other hand, it increases production, employee's morale, judicious use of space and time.

The following will ensure good housekeeping: -

1. Floors are kept clean and free from substances that can cause slips and fall, such as grease, oil, water, etc. broken floors should be repaired immediately.
2. Aisles, gangways, steps, passages and doorways are kept clear of obstructions and there should be free access to all parts of the workplace especially emergency routes.
3. Materials and tools especially those frequently used are stacked or kept in designated places and in such a way that they cannot roll off and fall on persons.
4. Soiled cleaning materials [e.g. rags] scraps and waste oil should be kept in the appropriate receptacles for proper disposals. Cigarettes ends or matches should not be thrown around the workplace or into receptacles containing oil soiled wastes that are capable of causing fire. Hazardous areas should be marked and "NO SMOKING" should be conspicuously placed.
5. Flammable materials should be stored in safe places and separated from non-flammable ones. Similarly, toxic/corrosive liquids/substances are to be kept in separate places.
6. Shells/racks should not be overloaded in order to avoid collapsing.
7. Access to safety equipment's [fire extinguisher, sprinklers etc] and first-aid boxes is free of obstructions at all times.
8. The workshop [workplace] is cleaned daily and cleared of scraps.
9. Receptacles or rubbish bin should be covered especially when waste are capable of causing ill health.
10. Extension cables and flexible power supply leading to hand tools and equipment should be coiled up and kept away from the work floor and passages in order to avoid tripping and falling of employees.
11. Absorbents should be use to soak oil, water and other equipments coolants that falls on the floor. A shield should be provided in cases where oil splashes from cutting or drilling operations into work ways.
12. Work clothes and boots should be kept in provided places and not hung here and there in the work place.

## **TRANSPORTATION SAFETY**

Employees of **DEE.P RESOURCES** may use road, water or air transportation while executing company's projects. These trips could be in company's vehicle or that of the client. It is the desire of this company that all employees conduct themselves in a safe manner while on board any means of transportation.

## **ROAD TRANSPORTATION**

To ensure the safety of worker and materials, **DEE.P RESOURCES** has a maintenance schedule for all its equipments and vehicles. The objectives are to ensure regular maintenance and thus avoid any sudden failure and accidents.

- All vehicles are examined and tested before committed to duties.
- Only trained and experienced drivers/operators are engaged to carryout assignments, and must hold valid government license.
- All vehicle drivers and their passengers must fasten their seat belts while on journeys.
- Drivers are required to adhere strictly to speed limits relative to road conditions and must observe traffic rules and regulations.
- Materials in the course of transportation must be secured to avoid falling off while the vehicle is in motion.
- Transportation of worker is done in approved passenger cars and not on tippers or open vans.

## **MARINE TRANSPORTATION**

The quartermaster is responsible for the safety of the crafts and passengers.

- All passengers must be able to swim to survival.
- They must wear buoyancy aids [e.g. life jackets].
- They must sit down. No passenger should sit at the edge of the boat.
- Passengers are to embark or disembark the craft only after securing it.
- They have to obey all other instructions given during a voyage.

## **AIR SAFETY**

- *Employees should obey all rules and regulations given by the pilot or displayed inside the aircraft.*
- Do not pass underneath or near the tail rotor when embarking or disembarking.
- Approach or leave the helicopter from the side or front in full view of the pilot.

- Seat belts must be fastened always.
- Hold your heart in your unless secured by chinstrap.

## **JOB CONTROL**

### **General**

- It is the responsibility of the head of a crew to take primary initiative to ensure that work is carried out according to plans and that hazards of the work are identified.
- From the foregoing, only qualified employees are permitted to carryout jobs with minimal supervision. For new employees or apprentice. Helpers, it is the duty of the more experienced personnel to supervise closely.
- Safety trainings must be built into periodic briefings given to all involved on site. Visitors to the site should fill in the visitors note, made to wear hardhat and briefed on the hazards and limit of their movement within the premises.
- For offshore work, the position of life raft and abandon procedures briefings are given.
- Smoking is not permitted in hazardous areas, matches; spark-producing tools must be surrendered at the reception before being permitted to enter work areas.
- **DEE.P RESOURCES** front seat passengers driven in salon vehicles must wear safety belts.
- If a driver is reckless, it is duty of the employees being conveyed to warn him and subsequently report to the base.
- At land sites, no riding is permitted on earth moving equipment such as bulldozers, dumper etc.
- Personnel are not permitted to ride in open body vehicles not licensed as personnel carrier.
- **DEE.P RESOURCES** personnel in transit by air must observe rules and regulations concerning the use of aircrafts, and must not carry prohibited luggage. All luggages must be declared at the lounge for check and subsequent weighting.
- Standards for work dress will depend upon the work and where it will be carried out. The basic work dress is the coverall, hardhat and the safety shoe. The personnel must be identifiable by wearing company's approved identity card.
- Work on decks or close to the edge of a marine craft requires mandatory wearing of inflatable life jacket. The life jacket may save a life if properly maintained and used.
- There may be severe restriction to the movement of persons in the client's premises especially when the plant or facility is live and work is carried out therein, warning notices barring the wandering of persons, employees of **DEE.P RESOURCES** visitors or unauthorized people will be displayed.
- Good housekeeping is essential and must be observed. Rubbish scrap or work piece should not be allowed to clutter aisles nor should the work area be kept unwept. Work areas must be kept neat and tidy by ensuring that everything is in its assigned place.

## **PRE – JOB COMMENCEMENT HAZARD ANALYSIS**

It is of good purpose that we strive to point out the hazard areas of a particular kind of job to our workforce before mobilization to enable them know applicable precautions and cautions before hands. This is vital and helps to make the work of the site safety officer lighter, easy and fruitful.

## **ON – THE SITE ROUTINE CHECKS**

The safety site supervisor will ensure that all workers are in their best mood to work. Any worker detected to be mentally, physically and emotionally ill or trouble, should be asked to stop work, as his state of condition is prone to unsafe act or accident. The site supervisor/safety officer must see at all times that none of the workers is under the influence of alcohol or drug while job is in progress. Ask the alcohol or druggist stir very clear of any operation. A working atmosphere that is conducive must be created amongst all at the site to ensure objective partnership in the attainment of the work goals.

## **POLICY / RULES FOR VARIOUS WORKS / OPERATION**

### **Water – borne operations**

Since the company carries out its operation not only on land but also in swamp and offshore locations, it is the declared policy of the company to deploy only those who can swim to survival for water borne operations. Safety life jackets are provided for personnel travelling or engaged in water borne operation. Ability to swim will be a requirement for recruitment in water born operations. **DEE.P RESOURCES** has the following policies in this regard..

- All employees must be swim-tested to a standard of personal survival.
- Floatation devices MUST be worn in and around crafts or such edges where there is a likelihood of someone fall into water.
- There shall be no night sailing.
- All swim-tested employees should possess valid swimming certificates and should always have this to present at embarkation point i.e. heliport and jetties.
- Use of dugout canoes for company operation is forbidden.
- Shoelaces should be kept loose when being transported by boat.
- It may become necessary to slip off shoes in extreme emergency.
  
- All should obey the quartermaster during the voyage. Ensure that all transported goods are declared and duly manifested.

### **While working offshore Employees must:**

- Wear a life jacket while engaged in work on deck.
- Must have passed a swimming proficiency test recognized by the client.



- Life jacket must be worn when boarding or disembarked from a boat or Ship in Addition to being worn while work is carried out on deck.
- Must not block access ways with materials or debris. Enough room must be Made available to do a job without blocking aisle.
- Safety equipment such as fire extinguisher, first-aid box and fuses must not be abused. Whenever an extinguisher is discharged, it must be reported for action to be taken.
- If you are sick, do not attempt to prescribe drugs for yourself, report to a doctor or site nurse for medical attention. The nurse must keep adequate record of drugs disbursed and the diagnosis / symptoms
- Every staff of **DEE.P RESOURCES** must be conversant with the emergency action to take in the event of hearing a fire alarm. For this station bills, detailing Initiation and the responsible persons to be contacted is clearly stated.
- If you are the first to discover fire or loss of containment of gas or oil, Your action must be in line with company agreed strategy for dealing with the problem.
- Accidents are unwanted occurrence, which can cause injury, damage to To equipment and adverse effect to the environment. Prevention of accident is Therefore a collective endeavor.
- If you are involved in an accident, report it and be prepared to give factual Information regarding its investigation.

## WELDING

- All welding equipment shall be in good mechanical and electrical condition.
- All connections, terminations, etc., shall be well made with appropriate and Recommended connectors, glands, etc.
- Welding generator insulation reading shall be checked regularly with the Appropriate insulation instrument i.e. Wee or Bridge Migger,
- Gas bottles shall be store in dry and shaded places in the upright and held in Position with chains or brackets.
- Bottles shall only be transported with safety caps screwed in place.
- Welding shall not be carried out near storage area containing flammable such as Diesel, petrol, etc.
- All welders must be appropriately dress for the job i.e. in their personal Protective clothing.



## **BURNING AND CUTTING OF METALS PLATES PIPES**

- Acetylene and oxygen bottles shall be clearly marked to avoid errors in Application
- They must be fitted with reducer valves and gauges.
- One gauge shall be on the bottle side, and the other on the hose side.
- The gauges must have areas shaded red and green to indicate unsafe and safe working pressure respectively.
- One-gauge pressure ratings must be 0.250 bar on the bottle side and 0-12 bar on the hose side for oxygen bottles. Burning torch hose shall be on the blue and must be leak free.
- Acetylene gauges pressure ratings must be 0-40 bar on the bottle side, and 0-2 bar on the hose side. Burning torch hose shall be red in colour and must be leak free.
- Empty bottles shall be adequately labeled and stored separately under shades. Only recommended tools must be used in connecting up.
- Burning torch nozzles shall be cleaned at all times and must not be pitted.
- Nozzles shall be lighted with recommended lighters. Matches, cigarettes, lighters Candles, etc. shall not be used.
- Fragile work platforms shall NOT be fabricated or constructed to aid fabricators in Their operations.
- Makeshift platforms, like stacking two or more paint drums on end shall not be Used.
- To prevent, injuries to fingers from sharp threads, pipe threads should be cleared with a wire brush.
- A hook should be used to prevent hand injuries when racking and unpacking drill Pipe and other tubular goods.

## **GRINDING OPERATION**

- Grinding operations can be cause serious injuries and the sparks produced can set fire to anything flammable. If a grinding machine is used when gas present, an explosion can result.
- All personnel engaging grinding operations will ensure that they are familiar with the permit to work system.
- If necessary, portable gas detectors will be used to ensure that the area in which the operation is to be performed is gas free.

- Supervisors will ensure that all personnel under their control are familiar with the procedures and requirements for entry into confined spaces and protected clothing requirement of all jobs.

### **Working with / operating compressors**

- Check that air receivers are equipped with relief valve(s)
- Check that receivers are pressures tested once every 6 months and marked with test pressures and dates.
- Check that all moving/rotating parts are adequately guarded.
- Check that the stop switch is conspicuously located.
- Check there is a drain provided at the lowest part of the air receiver.
- Check for oil and air leaks.
- All hoses used would be checked for wear and tear, leaks kinks.

### **Lifting/Hoisting operations**

- Lifting shackles, slings, etc shall be of adequate strengths and must be in good Condition.
- Only slings of same strength and capacity shall be store together on the same hook.
- Slings and shackles shall be stored away from harmful weather effects and Corrosion substances.
- All slings and shackles on rigs and other hoisting equipment shall be adequately labeled to indicate their safe working loads (S . W . L).
- Boom length and angles shall be tabulated and monitored closely during Operations.
- ONLY an appointed competent supervisor shall direct crane operations.
- The Riggers must be competent on the job.
- All persons involve in crane operations must be dressed in their personal Protective equipment such as hard hats, steel toe shoes or boots, gloves, etc.
- Cranes shall not be used as transport vehicles; standing under loads during hoisting in or within the area of travel is prohibited.
- No lifting shall be done without safety hooks or locks.
- Where the sub soil's bearing capacity is uncertain, dragline mats shall be used.
- Mobile crane outriggers must be extended before commencement of lifting operations.
- No crane shall be employed in lifting weights in excess of its capacity. Load indicators shall be installed on all cranes.
- Mobile cranes are not to travel load on load hook. Mobile cranes must be adequately secured before commencement of travel on the highway.
- All crane handling must be as per manufacturer's guide.

### **CHEMICAL HANDLING**

The special personal protection for normal usage includes:

- One-piece suit with integral hood.
- PVC Gloves
- Standard safety foot wear
- Mono-goggles
- Disposable dust respirator or half face mask respirator with dust filter cartridge  
(NPF7-10).

Extra care must be employed to avoid gross contamination of soil and fresh water zones with work chemicals. Proper storage of the chemicals, fuels and all other materials shall be maintained on DEE.P sites.

## **ELECTRICAL OPERATION**

The following precautions should be taken in operations involving electricity

- Only authorized persons should make electrical connections and repair electrical equipment.
- All equipment should be solidly earthed including hat for protection.
- Personnel should be never work in electricity circuits when wet. Wooden board or rubber matting should be provided in we areas.
- Personnel should work in circuits should not wear rings, watches or carry key, or similar metallic objects.
- Interlocks, fuss, circuit breakers, relays and other safety gadgets should not be tempered with.
- All grounding cables and connections temporarily removed for construction or other reasons should be replaced as soon as possible.

## COMMUNITY RELATION POLICY

### Objectives

1. To ensure a smooth execution of projects devoid of interruptions and disturbances arising from community related issues.
2. To put in place a clearly defined method of resolving such issues as they arise.
3. To ensure that the surrounding communities derive the maximum benefit from the project being executed.

### Plan

To achieve the above objectives the following steps are employed:

A courtesy visit to the local communities with our client is planned and carried out. During this visit we inform the communities of our proposed presence and seek their opinion about the kind of homage we need to pay as commercial visitors. We thereafter seize the opportunity of the common ground we have created to formally intimate the communities with the nature of the project and areas we need their assistance for a smooth operation. We then establish appropriate channel of communication between the communities, the client and us.

**DEE.P RESOURCES** dedicates a community relation officer for this project who shall be representing the community in **DEE.P RESOURCES** in deliberations. By due consultation with the community we shall request them to select representative – community liaison officers – for themselves who shall be deliberating with us on their behalf. Such CLOs will be used to abridge any communication problems with the local communities especially with respect to language, local customs & law, taboos, etc. CLOs will provide day-to-day information regarding the status of the relationship between the community and us.

### Community Development Gestures

- We shall recruit labor workers where necessary from the host communities.
- Train community youths on certain applicable skills related to projects being executed.
- Donate social infrastructures to communities related to the resources of **DEE.P** at the time of the project execution.

### Handling and Reporting Community Disturbances

Any community disturbance will be reported promptly as **DEE.P RESOURCES** community relation officer (CRO) is expected to quickly inform the client's representative. Our CRO and the client's representative shall then work about a systematic approach to establish the grievance of the communities involved and thereafter (within 24 hours of the occurrence) report the matter to the client's base office.

We shall try all means to resolve the matter within the community and if it is minor, we shall obtain clearance for work to continue and then relay situation report to client's base office.

For major issues we shall inform the client and together discuss a workable solution to the problem with the limits of the client and **DEE.P RESOURCES**.

As much as possible cash gifts or donations shall be avoided in meeting local communities demands.

Records of all such negotiations/deliberations is made available to our client to keep them inform on how community related issues are being handled in the subject project.

# NDT WORK

## COMPANY OVERVIEW

Dee.p Resources International Ltd is a leading provider of Non-Destructive Testing (NDT) services, delivering high-quality inspection solutions to industries such as oil & gas, construction, manufacturing, and power generation. Our commitment to safety, efficiency, and precision ensures the integrity and reliability of critical assets and structures.

---

## NDT SERVICES & TECHNIQUES

We specialize in a wide range of NDT techniques, including but not limited to:

1. **Ultrasonic Testing (UT)** – Used for detecting internal flaws in materials and welds, ensuring structural integrity.
  2. **Radiographic Testing (RT)** – X-ray and gamma-ray inspection for volumetric defect detection in welds and castings.
  3. **Magnetic Particle Testing (MT)** – Detecting surface and near-surface discontinuities in ferromagnetic materials.
  4. **Liquid Penetrant Testing (PT)** – Identifying surface defects in non-porous materials.
  5. **Eddy Current Testing (ET)** – Evaluating conductive materials for surface and near-surface defects.
  6. **Visual Testing (VT)** – Standardized visual inspection of welds, coatings, and structural components.
  7. **Acoustic Emission Testing (AE)** – Monitoring stress-induced emissions to assess material integrity.
  8. **Phased Array Ultrasonic Testing (PAUT)** – Advanced ultrasonic imaging for precise flaw detection.
  9. **Time of Flight Diffraction (TOFD)** – High-accuracy defect sizing in welds and structural components.
- 

## INSPECTION PROCEDURES & STANDARDS

Our inspection procedures align with international standards and best practices, including:

- **ASNT SNT-TC-1A** – Recommended Practice for Personnel Qualification.
  - **ISO 9712** – International Standard for NDT Personnel Certification.
  - **API 570 / 510 / 653** – Standards for piping, pressure vessel, and tank inspections.
  - **ASTM & ASME Codes** – Compliance with industry-specific material and welding inspection standards.
  - **EN ISO 17638 & 23277** – European standards for magnetic particle and penetrant testing.
  - **AWS D1.1** – Structural welding inspection guidelines.
- 

## CERTIFICATIONS & QUALIFICATIONS

Dee.p Resources International Ltd operates with a highly trained and certified team of professionals, holding certifications such as:

*Dee.p Resources International Limited*

- **ISO 9001:2015** – Quality Management System.
  - **ISO 45001:2018** – Occupational Health & Safety.
  - **ISO 14001:2015** – Environmental Management System.
  - **ASNT Level I, II & III** – Certified NDT Inspectors.
  - **PCN & CSWIP Certified Inspectors** – Compliance with European standards.
  - **API Certified Inspectors** – Ensuring compliance with American Petroleum Institute standards.
- 

## INDUSTRIES SERVED

We provide NDT solutions across various industries, including:

- **Oil & Gas** – Pipeline, refinery, and offshore platform inspections.
  - **Construction** – Structural steel and welding integrity evaluations.
  - **Aerospace** – Aircraft component and composite material testing.
  - **Power Generation** – Turbine, boiler, and pressure vessel inspections.
  - **Manufacturing** – Quality control and material integrity assessments.
- 

## WHY CHOOSE DEE.P RESOURCES INTERNATIONAL LTD?

- **Expertise & Experience** – A team of highly skilled and certified NDT professionals.
  - **Cutting-Edge Technology** – Advanced equipment for precise and reliable inspections.
  - **Compliance & Safety** – Adherence to international safety and quality standards.
  - **Customer-Centric Approach** – Tailored solutions to meet client-specific requirements.
  - **Timely & Cost-Effective Services** – Minimizing downtime while ensuring asset integrity.
- 

## DEE.P GUIDELINE TO NDT PROCEDURE:

### 1. ISO 9712:2021 – Qualification and Certification of NDT Personnel

This standard specifies the requirements for the qualification and certification of personnel performing industrial NDT. It covers various methods, including ultrasonic, radiographic, magnetic particle, penetrant, eddy current, acoustic emission, thermographic, and visual testing. The 2021 edition is the latest and ensures that NDT personnel meet global competency criteria.

### 2. ANSI/ASNT CP-189:2024 – ASNT Standard for Qualification and Certification of NDT Personnel

Published by the American Society for Nondestructive Testing (ASNT), this standard provides comprehensive criteria for the qualification and certification of NDT personnel. The 2024 edition builds upon previous guidelines, offering detailed requirements for Levels I, II, and III certifications.

### 3. ISO/TS 25107:2019 – NDT Training Syllabuses

This technical specification offers guidelines for NDT training syllabuses, aiming to harmonize and maintain the general standard of training for NDT personnel. It establishes the minimum requirements for structured training to ensure eligibility for qualification examinations leading to third-party certification.

#### 4. ISO/TS 25108:2018 – NDT Personnel Training Organizations

This document provides requirements and recommendations for NDT training organizations, ensuring they meet the standards necessary to effectively train NDT personnel. It aims to harmonize and maintain the general standard of training to meet industrial needs.

#### 5. ASTM E1316-24b – Standard Terminology for Nondestructive Examinations

This standard provides standard terminology relating to NDT methods, ensuring clear communication and understanding within the industry. The 2024 edition is the most recent update.

#### 6. ISO 22825:2017 – Ultrasonic Testing of Welds in Austenitic Steels and Nickel-Based Alloys

This standard specifies the approach for developing procedures for the ultrasonic testing of welds in specific materials, including stainless steels and nickel-based alloys. It ensures the reliability and effectiveness of ultrasonic testing methods for these materials.

#### DEE.P NDT RECOMMENDATION:

- **Personnel Certification:** Ensure that all NDT personnel are certified according to ISO 9712:2021 standards. This certification verifies the competence of personnel across various NDT methods.
- **Training Programs:** Align internal training programs with the guidelines provided in ISO/TS 25107:2019 and ISO/TS 25108:2018. This alignment guarantees that training content and delivery meet international standards.
- **Standard Operating Procedures (SOPs):** Update SOPs to reflect the latest methodologies and terminologies as outlined in the most recent ASTM and ISO standards. Regular reviews and updates will ensure ongoing compliance and effectiveness.
- **Continuous Professional Development (CPD):** Encourage NDT personnel to engage in ongoing training and professional development to stay abreast of the latest advancements and best practices in the field.

#### LIST OF NDT JOB EXECUTED

S/N	CLIENTS	JOBDESCRIPTION	YEAR	STATUS
1.	HENAN PETROLEUM COMPANY NIG. LTD	NDT/MPI INSPECTION ON ROTARY CONNECTION ROD AND GEAR ROAD	2025	COMPLETED
2.	HENAN PETROLEUM COMPANY NIG. LTD 120	NDT/MPI INSPECTION ON MAST STRUCTURE AND RIG EQUIPMENT	2025	COMPLETED
3.	HENAN PETROLEUM COMPANY NIG. LTD RIG 119	DT/MPI INSPECTION ON ALL RIG EQUIPMENTS, DRILLING PIPES, ROTARY CONNECTION AND OTHER RIG EQUIPMENTS	2025	COMPLETED

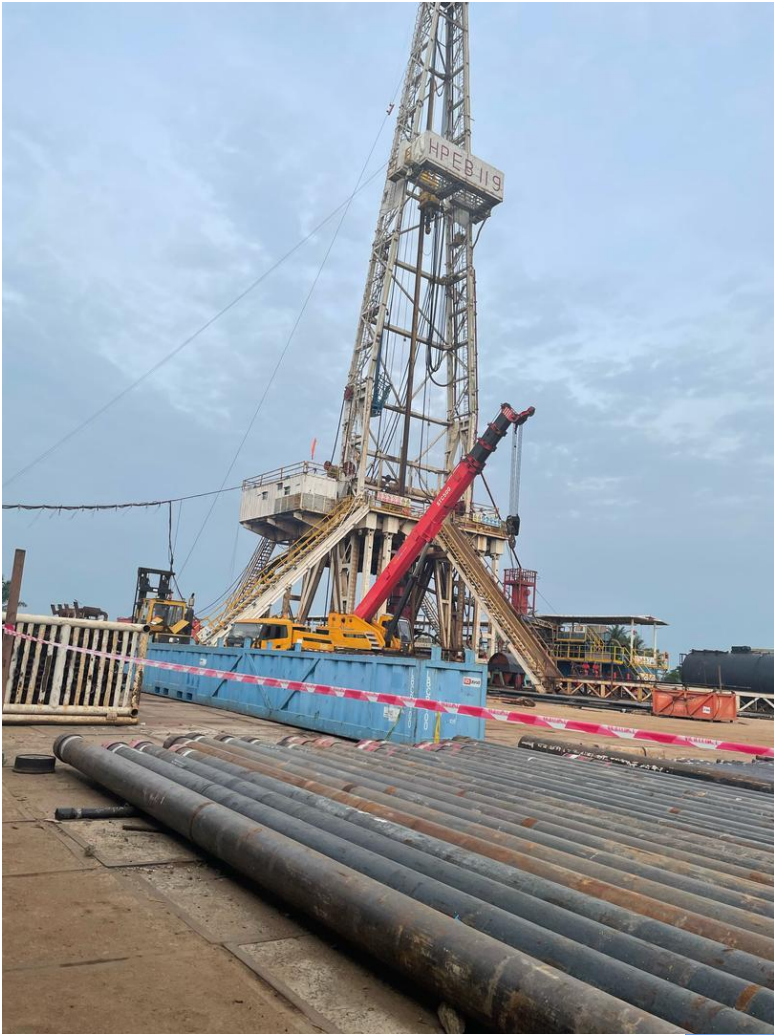




















## COMPANY REGISTRATION DOCUMENTS

BC 80987



CORPORATE AFFAIRS COMMISSION  
FEDERAL REPUBLIC OF NIGERIA

# Certificate of Incorporation

*I hereby certify that*

**DEE.P RESOURCES INTERNATIONAL LTD**

*is this day incorporated under the COMPANIES AND ALLIED MATTERS  
ACT 1990 and that the Company is Limited By Shares.*

*Given under my hand at Abuja this Twenty-Seventh day of  
April, 2009*



**A. ALMUSTAFA**  
Registrar-General

259501



Telephone: 084-612951  
mail: rumuokwurushi@yahoo.com  
Correspondences and Enquiries are  
addressed to the Executive Chairman.



288 PH/ Aba Express Way  
Rumuokwurushi Junction  
Port Harcourt,  
Rivers State.

**RUMUOKWURUSHI INTEGRATED TAX OFFICE**

7<sup>th</sup> September, 2009

Incorporation RC: 813937

Date of Incorporation: 27/04/2009

The Managing Director,  
Dee .P Resources International Ltd.,  
House 17B, 5<sup>th</sup> Street,  
Elekahia Housing Estate,  
Port Harcourt.

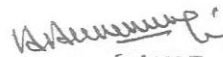
Dear Sir,

**VALUE ADDED TAX (VAT) IDENTIFICATION NUMBER**

This is to bring to your notice that, your organisation has been registered as a VAT Collection Agent. Your VAT Number is **SS/RM/VT/10002813937**. Please you are advised to render returns on monthly basis as stated in section 12(1) of the Value Added Tax Decree 102 of 1993. You may wish to quote your Identification Number in all your future correspondence with Federal Inland Revenue Service.

Please be informed that your Tax Identification Number (**TIN**) is **04049007- 0001**. Your VAT Certificate shall be issued to you in due course.

Yours faithfully,

  
AMINU ABUBAKAR  
ADT/TAX CONTROLLER  
RUMUOKWURUSHI ITO



FEDERAL REPUBLIC OF NIGERIA  
**PERMIT TO OPERATE AS AN OIL INDUSTRY SERVICE COMPANY**  
**SPECIALIZED CATEGORY**

PERMIT NO: NUPRC/OGISP/25/2489639/N407954

This Permit is hereby granted to

**DEE .P RESOURCES INTERNATIONAL LIMITED**

of **18 ONWUCHEKWA STREET PORT HARCOURT, RIVERS, NIGERIA**

to render the service to the Oil Industry in the Category listed hereunder:

**CALIBRATION SERVICES**

- Relief/Pressure Safety Valves Certification

This Permit expires on the **Thursday, March 5, 2026**

Fee Paid: N **250,000.00**

Dated **5th** day of **March** 20 **25**



Commission Chief Executive

This permit does not cover "Supply of Expatriate Manpower" in any guise



FEDERAL REPUBLIC OF NIGERIA  
PERMIT TO OPERATE AS AN OIL INDUSTRY SERVICE COMPANY  
**SPECIALIZED CATEGORY**

PERMIT NO: NUPRC/OGISP/25/6346692/N407959

This Permit is hereby granted to

**DEE .P RESOURCES INTERNATIONAL LIMITED**

of **18 ONWUCHEKWA STREET PORT HARCOURT, RIVERS, NIGERIA**

to render the service to the Oil Industry in the Category listed hereunder:  
**FACILITY MAINTENANCE SERVICES**

- Corrosion Prevention & Control Services
- Non Destructive Testing (NDT)

This Permit expires on the **Thursday, March 5, 2026**

Fee Paid: N. **250,000.00**

Dated **5th** day of **March** 20 **25**



Commission Chief Executive

This permit does not cover "Supply of Expatriate Manpower" in any guise





FEDERAL REPUBLIC OF NIGERIA  
**PERMIT TO OPERATE AS AN OIL INDUSTRY SERVICE COMPANY**  
**SPECIALIZED CATEGORY**

PERMIT NO: NUPRC/OGISP/25/4914435/N421048

This Permit is hereby granted to

**DEE .P RESOURCES INTERNATIONAL LIMITED**

of **18 ONWUCHEKWA STREET PORT HARCOURT, RIVERS, NIGERIA**

to render the service to the Oil Industry in the Category listed hereunder:  
**TECHNICAL CONSULTANCY**  
- Lifting Equipment Certification

This Permit expires on the **Friday, June 19, 2026**

Fee Paid: N. **250,000.00**

Dated **19th** day of **June** **20 25**



Commission Chief Executive



This permit does not cover "Supply of Expatriate Manpower" in any guise



**NIGERIAN OIL & GAS INDUSTRY CONTENT JOINT QUALIFICATION SYSTEM (NOGIC JQS) REGISTRATION CERTIFICATE**

This is to certify that :-

**DEE .P RESOURCES INTERNATIONAL LTD**

*Of 13 Onwuchekwa Street, Port Harcourt, Rivers State*

Has been registered on the NOGIC JQS platform as a Service Company in the Oil & Gas Industry to provide the following service(s):

**INTEGRITY TEST SERVICES, WATER BOREHOLE SERVICES**

Issued on this day: July 5, 2024

The Board reserves the right to revoke this Certificate in the event of the violation of any of the provisions of the NOGICD Act and amendments thereto, Or where the Board discovers that the Certificate was obtained by misrepresentation of facts.

This Certificate expires on July 4, 2025



.....  
**Executive Secretary**



FEDERAL REPUBLIC OF NIGERIA  
**PERMIT TO OPERATE AS AN OIL INDUSTRY SERVICE COMPANY**  
**MAJOR CATEGORY**

PERMIT NO: NUPRC/OGISP/24/8415640/N367587

This Permit is hereby granted to

**DEE .P RESOURCES INTERNATIONAL LIMITED**

of **18 ONWUCHEKWA STREET PORT HARCOURT, RIVERS, NIGERIA**

to render the service to the Oil Industry in the Category listed hereunder:

**INTEGRITY TEST**

- Underground Oil and Gas Storage Tanks

This Permit expires on the **Friday, June 6, 2025**

Fee Paid: ₦ **25,000.00**

Dated **6th** day of **June** **20 24**



Commission Chief Executive



This permit does not cover "Supply of Expatriate Manpower" in any guise



FEDERAL REPUBLIC OF NIGERIA  
**PERMIT TO OPERATE AS AN OIL INDUSTRY SERVICE COMPANY**

**MAJOR CATEGORY**

PERMIT NO: NUPRC/OGISP/24/8145440/N367584

This Permit is hereby granted to

**DEE .P RESOURCES INTERNATIONAL LIMITED**

of **18 ONWUCHEKWA STREET PORT HARCOURT, RIVERS, NIGERIA**

to render the service to the Oil Industry in the Category listed hereunder:

**WATER BOREHOLE**

- Water Borehole Drilling; Borehole water treatment; and Borehole water Maintenance

This Permit expires on the **Friday, June 6, 2025**

Fee Paid: ₦ **25,000.00**

Dated **6th** day of **June** **20 24**



Commission Chief Executive



This permit does not cover "Supply of Expatriate Manpower" in any guise



FEDERAL REPUBLIC OF NIGERIA  
**PERMIT TO OPERATE AS AN OIL INDUSTRY SERVICE COMPANY**  
**MAJOR CATEGORY**

PERMIT NO: NUPRC/OGISP/23/2186911/N335835

This Permit is hereby granted to

**DEE .P RESOURCES INTERNATIONAL LIMITED**

of **18 ONWUCHEKWA STREET PORT HARCOURT, RIVERS, NIGERIA**

to render the service to the Oil Industry in the Category listed hereunder:

**INTEGRITY TEST SERVICES**

- Pressure Testing/Leak Detection of Vessels/Pipeline

This Permit expires on the **Saturday, September 14, 2024**

Fee Paid: ₦ **25,000.00**

Dated **14th** day of **September** **20 23**



Commission Chief Executive



This permit does not cover "Supply of Expatriate Manpower" in any guise





It pays to pay your taxes..

**TAX CLEARANCE  
CERTIFICATE**

**TCC NO** : 224163721238  
**TAX OFFICE** : MSTO RUMUKWURUSHI  
**DATE** : 2024-05-29

**Name of Company** : DEE .P RESOURCES INTERNATIONAL LTD  
**RC No** : 813937  
**Date of Incorporation** : 2009-04-27  
**TIN** : 04049007-0001  
**FIRS ID** : 2101110021238  
**Business Address** : 17b 5th street elekahia estate  
**Business Status** : Commenced Business 2010-06-01



This is to certify that the above named company has rendered Income Tax, Value Added Tax, Information Technology Development Levy, Education Tax, as well as other tax returns and paid the assessed taxes in accordance with the relevant tax laws for all years including the past three assessment years as detailed hereunder.

	Assessment Year 2021	Assessment Year 2022	Assessment Year 2023
Revenue	NGN 0.00	NGN 0.00	NGN 250,000.00
Assessible Profit/Loss	NGN 0.00	NGN 0.00	(10,281,514.00)
Total Profit	NGN 0.00	NGN 0.00	NGN 0.00
Tax Payable	NGN 0.00	NGN 0.00	NGN 0.00
Tax Outstanding (If Any)	NGN 0.00	NGN 0.00	NGN 0.00

**Source of Income** : Other personal service activities n.e.c.  
**Other Comments** : Issued  
**This Certificate Expires on** : 2024-12-31



**USMAN AHMED**  
Tax Controller

Official Stamp Impression

Name & Rank of Approving Officer

# OUR PICTURE GALLERY



***MOTOR DRILLING RIG.***

**OUR  
PICTURE  
GALLERY**

*Dee.p Resources International Limited*





**Casing of Well...**

**Pulling Out of Drilling Pipe...**



**Pump installation in progress...**



**Anode installation in progress.... [Cathodic protection]**

































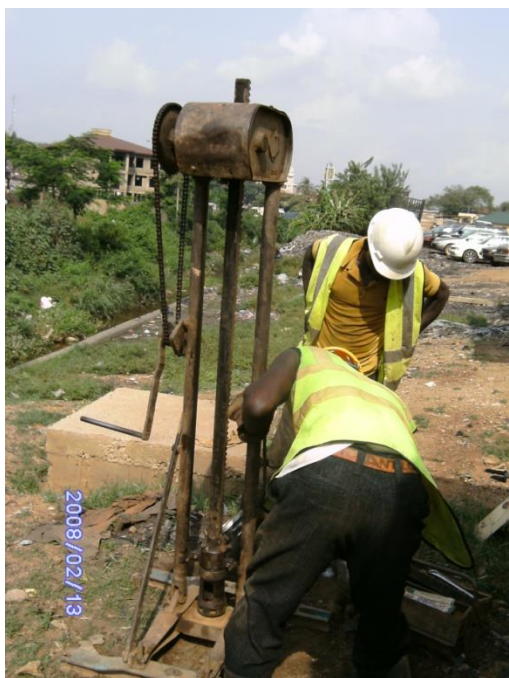












Soil Test At Oyo State Project At New Dugbe Market In Ibadan. / Drilling In Progress



Pulling Out Of Hole.



*Mud Pit .*



*Installation Of Screen To The Hole*



Casing Pipe and Screen



***DRILLING IN PROGRESS***



***DRILLING IN PROGRESS***



***MOTOR DRILLING RIG.***





...Installing pressure guage in process by Dee.p Resournces personnel...



Mud Pump Pressure gauge Inspection and Installation. ..Certified Pressure Gauge..



Instrumentation Check & Certification on Driller control



Inspection and certification of pressure guage.



**Plant Maintenance Fabrication Process**



**Sandblasting and painting of the silo tank.**





**Erecting Of Scaffolding In Spdc I.A @ Rumuomasi PHC. / Sand Blasting Of Heat Exhaust In Spdc I.A Gas Turbine.**



**Primer Of Gas Turbine @ Spdc I.A Rumuomasi In PHC. / Painting Of Heat Exhaust Of Gas Turbine In Spdc I.A Rumuomasi In PHC.**



**Men At Work In Spdc I.A Gas**



**Painting Of Gas Flow Station**



**Dee.p Resources Teams of Painters At Work**





**Painting in Progress By Dee.P Resources Personnel**



**Lifting Skip Blasting and Painting Completion / Portacabine Painting Completion**



**Pipes Blasting and Painting Completion @ DEE.P BASE, Trans Amadi, PHC./ Weld neck Pipe Painting Completion.**

*Our Spraying Machine and Hoes Unit and Spraying Unit*



*Our Spraying Machine / Spraying Painter's Hood*



**Completion Of Community Borehole In Bayelsa**



COMMUNITY WATER STORAGE TANK @ NEMBE , BAYELSA STATE.





**Compressor Operator**



**Priming Processing**



**Work Way Blasting Processing /**



**Weld neck Pipe Blasting.**



Spray Painting Processing



Equipment Preparation and Arrangement.





**Sandblasting Operation in Progress.**



**Supervisor Inspecting the Blasting Surfaces.**

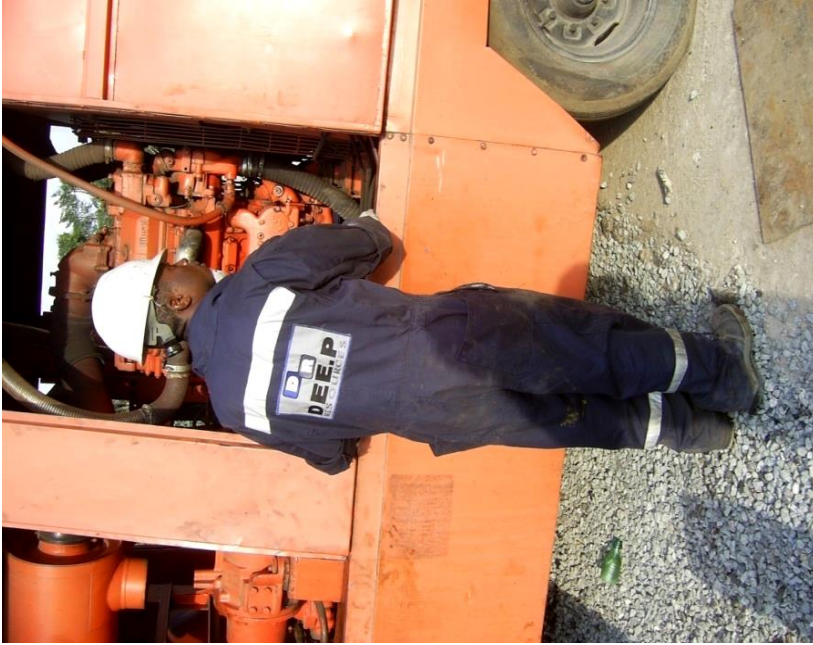


**Fabrication of mud Tank Work in Geoplex/Transocean**



**Work Way Painting in Geoplex /Transocean**





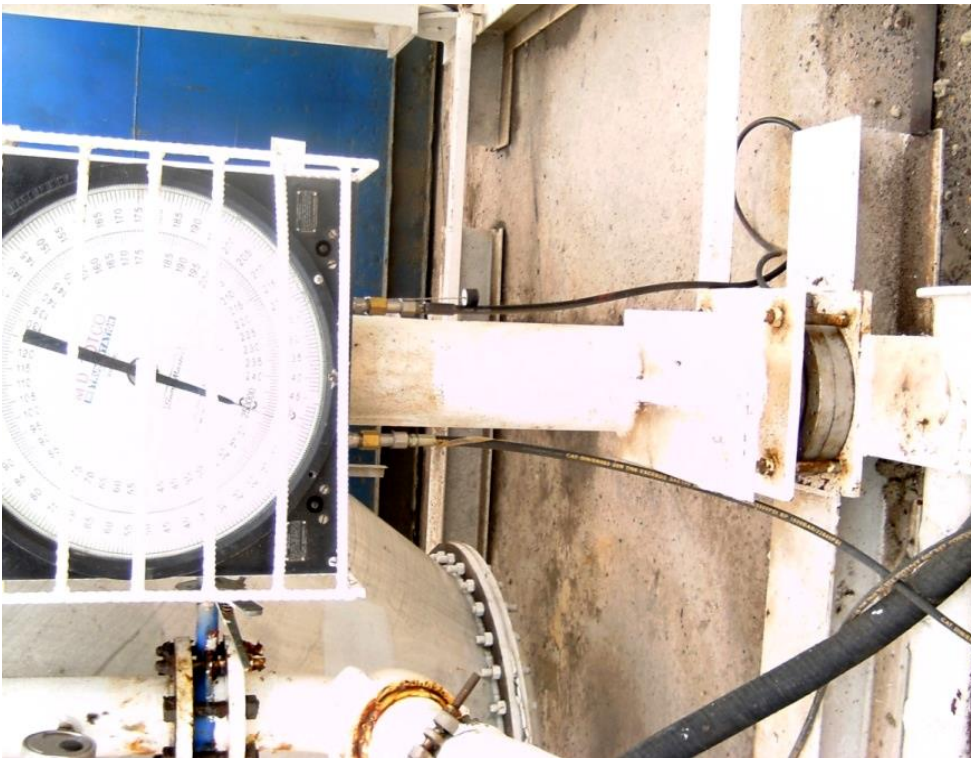
Compressor Operator



Priming Processing



**Work Way Blasting Processing**



**Calibration and Installation of Silo Load Cell and Indicator**





Instrumentation / Calibration in progress...



Site Inspection



Inspection during Calibration Job



Calibration in progress with certified equipment





Calibration in progress...



Team's work...





Dee.p Resource certified skips

Dee.p Resource certified skips

*International Limited*



Dee.p Resource certified skips



Dee.p Resource certified skips loading...

# **DEE.P RESOURCES INTERNATIONAL LTD**

## **CONTACT US:**

**PORT HARCOURT OFFICE ADDRESS:**  
**PLOT 35 TRANS AMADI INDUSTRIAL LAY OUT,**  
**PORT HARCOURT, RIVERS STATE, NIGERIA**  
**TEL: 08033156621 ,08124130520, 09033723224**  
**EMAIL: [deepresoucesltd@gmail.com](mailto:deepresoucesltd@gmail.com)**

**PORT HARCOURT SITE OFFICE:**  
**CHIEF ELBOM ROAD, OPPOSITE CHARLES**  
**DALE SCHOOL, IGRITA, PORT HARCOURT.**  
**RIVERS STATE**

**WARRI OFFICE ADDRESS: H47, RD 2**  
**IMMIGRATION ESTATE, AIRPORT ROAD,**  
**WARRI DELTA STATE**

**LAGOS OFFICE ADDRESS: NO.1 ADE AJAYI**  
**STREET, ZONE A4, OGUDU G.R.A, OGUDU,**  
**LAGOS**